

Environmental Earth Sciences

Mud flow dynamics at gas seeps (Nirano Salse, Italy)

--Manuscript Draft--

Manuscript Number:	ENGE-D-21-02283R1
Full Title:	Mud flow dynamics at gas seeps (Nirano Salse, Italy)
Article Type:	Original Manuscript
Corresponding Author:	Appello 23 Febbraio 2021 - Prova scritta Modulo Marco Antonellini, PhD University of Bologna: Universita di Bologna Bologna, Bologna ITALY
Corresponding Author Secondary Information:	
Corresponding Author's Institution:	University of Bologna: Universita di Bologna
Corresponding Author's Secondary Institution:	
First Author:	Beatrice Maria Sole Giambastiani, PhD
First Author Secondary Information:	
Order of Authors:	Beatrice Maria Sole Giambastiani, PhD
	Marco Antonellini, PhD
	Massimo Nespoli, PhD
	Massimo Bacchetti
	Antonino Calafato, PhD
	Marzia Conventi
	Andrea Dadomo, PhD
	Giovanni Martinelli, PhD
	Maria Morena
	Serena Venturoli
	Antonello Piombo, PhD
Order of Authors Secondary Information:	
Funding Information:	
Abstract:	<p>The Nirano Salse, known since the Roman Times, are one of the most beautiful and scenic mud volcanoes areas of Italy with thousands of visitors every year. In this work, we apply novel (for the context) hydrogeological techniques to characterize mud levels in the Salse by means of GPS-RTK positioning and continuous level logging within mud conduits. This is important to quantify the gas-liquid ratio in the conduits and evaluate the potential for dangerous abrupt mud eruptions. The results presented suggest that different mud levels in mud volcanoes clusters are due to the different gas-liquid ratio in the conduits and not necessarily exclude interconnection at depth, a hypothesis, on the other hand, that seems strengthened by mud level time series correlations. The presence of shallow aquifers at a depth of 5 to 30 m is also supported by our field data and allows us to delineate the boundaries of the shallow mud reservoir – pipes system and its overall shape. The shallow aquifers may provide a temporary storage for the ascending gas and when fluid pressure in these aquifers exceeds the tensional strength of the sedimentary rock, leakage of fluids to the surface would occur. In this case, if the gas-liquid ratio is high, mud volcanoes develop into tall gryphons and tend to have a discontinuous activity with sudden eruptions of mud after long periods of quiescence. This, together with the knowledge of shallow conduits localization has an important implication for site safety in proximity to the mud volcanoes. Our inferences based on mud level relationships to mud extrusion</p>

	<p>dynamics can be applied to lower risk in other mud volcanoes areas of the world with high geo-tourist visits, such as those of Trinidad, Azerbaijan, and Colombia.</p>
<p>Response to Reviewers:</p>	<p>Please see attached formatted document.</p> <p>Reply to reviewers Reviewer 1 Authors It is a very interesting study and real-time analysis. This shows more importance of Mudflow and its impact. Also, the study shows the environmental and geotourism issues. Thank you for the appreciation. We believe that the amended manuscript answers your following comments. The authors stated that applied techniques and methods were never done before, and this study is pioneering in that. So, how do we validate the relationship between one another (hydrogeologic, geostatistical and geologic)? These relationships have been validated by our time series analysis coupled by the knowledge of the geology in the area (please see our amended discussion). The recent literature needs to be updated related to the scope of the model/techniques. We have updated in the introduction the recent literature (Gamkrelidze et al. 2021)</p> <p>Reviewer 2 Authors Whilst study provides some interesting insights into the process operating within active mud volcanoes, the current manuscript presents a focused site-specific case study which may not be of interest to the broad readership of the journal. I therefore recommend that the paper is not appropriate for publication in its current form but could be reconsidered for publication should the authors be prepared to make major revisions as summarised below. We thank the reviewers for the very insightful comments. They have been particularly important to focus and highlight the importance of our work. We think that we have addressed all points raised by the reviewer.</p> <ol style="list-style-type: none"> 1. The abstract is very short and does not provide any context as to why this study is important for either the site or the understanding of mud volcanoes more broadly. The abstract has been expanded and now it should highlight the motivations of our work. 2. The introduction comprised of three short paragraphs and only the first of these is concerned with the broader context of mud volcanoes. The second two paragraphs are site specific information. As there is little attempt to frame this study in relation to the existing knowledge of mud volcanoes within the international literature and discuss how the findings of the study could be important for other mud volcano areas. A broader introduction which clearly identifies the limitation of previous studies and how this helps address this would greatly increase the readership of the paper. This was a good advice. Please, see the new restructured introduction. The context of mud volcanoes has been made broader and the importance of our work in this context has been highlighted. 3. The Study area characterisation provides a detailed introduction to the site but is difficult for the reader to understand why the information being presented is important context for the study. As above a clearer narrative throughout the paper would greatly improve this. The whole section 2 has been widely modified and improved based on this comment. Two new sections (2.4 and 2.5) have been moved from the discussion and added here. 4. The discussion provides a useful conceptual model for the site, but it is difficult to determine what is the original contributions from this study and what is based on previous literature. I would recommend that the geological model from Bonini (2008) is presented earlier in the site information section so that the Discussion can focus on the finding from this study (Fig 11 b,c d). In addition, it is difficult to relate figure 11 d to figure 11 b and 11 c. Could the cross section be included on Figure 11 a? It is a good advice. We have presented the geological model of Bonini earlier in the 'Study area characterization' section (see new paragraph 2.5). The geological model by Bonini (2008) has been deleted from Fig. 11 and added to Fig. 1. Fig. 11 and related caption have been modified. The conceptual model (new Fig. 11c) is ideally positioned perpendicular to section AA' so that it crosses areas with both gryphons and mud pools. It is not scaled 5. The discussion does not discuss the implications of the findings. Is the conceptual model novel? How does it compare to other mud volcanoes field studies elsewhere?

How could these results be applicable to other systems and what are the implications? This is greatly needed. We have fixed these points that were strongly needed. Please see revised discussion in the beginning and end of section 5.

6. The Conclusions does not clearly state why these findings are important or if they are novel. The broader implications of the study findings in relation to other mud volcanoes in Italy and internationally is needed. The conclusions have been restructured and broader implications highlighted.

7. Some additional more minor suggestions and corrections are provided as track changes and comments in the reviewed version of the manuscript attached. We have taken care of these in the annotated manuscript. We have replied right below each comment.

Bologna, 20/05/2022

Dear Chief Editor Prof. Yan Zheng

We are resubmitting to Environmental Earth Sciences our paper “Mud flow dynamics at gas seeps (Nirano Salse, Italy)” - ENGE-D-21-02283 after implementing the moderate revisions suggested by the reviewers.

We hope that in its present form it is acceptable for publication.

We would like to thank you and the two reviewers for the insightful comments that have contributed to greatly improve our manuscript.

Regards

Marco Antonellini

Reply to reviewers	
Reviewer 1	Authors
It is a very interesting study and real-time analysis. This shows more importance of Mudflow and its impact. Also, the study shows the environmental and geotourism issues.	Thank you for the appreciation. We believe that the amended manuscript answers your following comments.
The authors stated that applied techniques and methods were never done before, and this study is pioneering in that. So, how do we validate the relationship between one another (hydrogeologic, geostatistical and geologic)?	These relationships have been validated by our time series analysis coupled by the knowledge of the geology in the area (please see our amended discussion).
The recent literature needs to be updated related to the scope of the model/techniques.	We have updated in the introduction the recent literature (Gamkrelidze et al. 2021)
Reviewer 2	Authors
Whilst study provides some interesting insights into the process operating within active mud volcanoes, the current manuscript presents a focused site-specific case study which may not be of interest to the broad readership of the journal. I therefore recommend that the paper is not appropriate for publication in its current form but could be reconsidered for publication should the authors be prepared to make major revisions as summarised below	We thank the reviewers for the very insightful comments. They have been particularly important to focus and highlight the importance of our work. We think that we have addressed all points raised by the reviewer.
1. The abstract is very short and does not provide any context as to why this study is important for either the site or the understanding of mud volcanoes more broadly.	The abstract has been expanded and now it should highlight the motivations of our work.
2. The introduction comprised of three short paragraphs and only the first of these is concerned with the broader context of mud volcanoes. The second two paragraphs are site specific information. As a there is little attempt to frame this study in relation to the existing knowledge of mud volcanoes within the international literature and discuss how the findings of the study could be important for other mud volcano areas. A broader introduction which clearly identifies the limitation of previous studies and how this helps address this would greatly increase the readership of the paper.	This was a good advice. Please, see the new restructured introduction. The context of mud volcanoes has been made broader and the importance of our work in this context has been highlighted.

<p>3. The Study area characterisation provides a detailed introduction to the site but is difficult for the reader to understand why the information being presented is important context for the study. As above a cleared narrative throughout the paper would greatly improve this.</p>	<p>The whole section 2 has been widely modified and improved based on this comment. Two new sections (2.4 and 2.5) have been moved from the discussion and added here.</p>
<p>4. The discussion provides a useful conceptual model for the site, but it is difficult to determine what is the original contributions from this study and what is based on previous literature. I would recommend that the geological model from Bonini (2008) is presented earlier in the site information section so that the Discussion can focus on the finding from this study (Fig 11 b,c d). In addition, it is difficult to relate figure 11 d to figure 11 b and 11 c. Could the cross section be included on Figure 11 a?</p>	<p>It is a good advice. We have presented the geological model of Bonini earlier in the 'Study area characterization' section (see new paragraph 2.5). The geological model by Bonini (2008) has been deleted from Fig. 11 and added to Fig. 1. Fig. 11 and related caption have been modified. The conceptual model (new Fig. 11c) is ideally positioned perpendicular to section AA' so that it crosses areas with both gryphons and mud pools. It is not scaled</p>
<p>5. The discussion does not discuss the implications of the findings. Is the conceptual model novel? How does it compare to other mud volcanoes field studies elsewhere? How could these results be applicable to other systems and what are the implications? This is greatly needed.</p>	<p>We have fixed these points that were strongly needed. Please see revised discussion in the beginning and end of section 5.</p>
<p>6. The Conclusions does not clearly state why these findings are important or if they are novel. The broader implications of the study findings in relation to other mud volcanoes in Italy and internationally is needed.</p>	<p>The conclusions have been restructured and broader implications highlighted.</p>
<p>7. Some additional more minor suggestions and corrections are provided as track changes and comments in the reviewed version of the manuscript attached.</p>	<p>We have taken care of these in the annotated manuscript. We have replied right below each comment.</p>

[Click here to view linked References](#)

Mud flow dynamics at gas seeps (Nirano *Salse*, Italy)

Giambastiani B.M.S.¹, Antonellini M.^{1*}, Nespoli M.², Bacchetti M.², Calafato A.¹, Conventi M.³, Dadomo A.⁴,
Martinelli G.⁵, Morena M.³, Venturoli S.^{1,2}, Piombo A.²

¹ Department of Biological, Geological, and Environmental Sciences, Ravenna Campus, University of Bologna (Italy): beatrice.giambastiani@unibo.it; antonino.calafato@unibo.it;

² Department of Physics and Astronomy, University of Bologna (Italy): massimo.nespoli2@unibo.it;
massimo.bacchetti@unibo.it; venturolisserena@gmail.com; antonello.piombo@unibo.it

³ Fiorano Modenese Municipality, Regional Natural Reserve of Nirano *Salse* (Italy):
mconventi@comune.fiorano-modenese.mo.it; dmorena@comune.fiorano-modenese.mo.it;

⁴ GEOINVEST s.r.l., Piacenza (Italy): andrea.dadomo@geoinvest.it;

⁵ National Institute of Geophysics and Volcanology (INGV), Bologna (Italy):
giovanni.martinelli15@gmail.com;

*corresponding author: m.antonellini@unibo.it

Statement

All authors contributed to the study conception and design. Material preparation, data collection, and analysis were performed by Giambastiani BMS, Antonellini M, Nespoli M, Bacchetti M, Calafato A, Venturoli S, and Piombo A. The first draft of the manuscript was written by Giambastiani BMS, Antonellini M, Nespoli M, and all authors commented on previous versions of the manuscript. All authors read and approved the final manuscript.

This study was partially funded by the Fiorano Modenese Municipality (Italy).

The authors have no financial or proprietary interests in any material discussed in this article.

ABSTRACT

The Nirano *Salse*, known since the Roman Times, are one of the most beautiful and scenic mud volcanoes areas of Italy with thousands of visitors every year. In this work, we apply novel (for the context) hydrogeological techniques to characterize mud levels in the *Salse* by means of GPS-RTK positioning and continuous level logging within mud conduits. This is important to quantify the gas-liquid ratio in the conduits and evaluate the potential for dangerous abrupt mud eruptions. The results presented suggest that different mud levels in mud volcanoes clusters are due to the different gas-liquid ratio in the conduits and not necessarily exclude interconnection at depth, a hypothesis, on the other hand, that seems strengthened by mud level time series correlations. The presence of shallow aquifers at a depth of 5 to 30 m is also supported by our field data and allows us to delineate the boundaries of the shallow mud reservoir – pipes system and its overall shape. The shallow aquifers may provide a temporary storage for the ascending gas and when fluid pressure in these aquifers exceeds the tensional strength of the sedimentary rock, leakage of fluids to the surface would occur. In this case, if the gas-liquid ratio is high, mud volcanoes develop into tall gryphons and tend to have a discontinuous activity with sudden eruptions of mud after long periods of quiescence. This, together with the knowledge of shallow conduits localization has an important implication for site safety in proximity to the

Commented [A1]: Why is this important?

Commented [A2]: We have underlined in the abstract the importance of this approach

Commented [A3]: I think there need to a statement on why this important. What are the implications of these findings? Are they important for other mud volcano areas?

Commented [A4]: We added a statement on why this is important in other mud volcanoes areas.

1

2
3
4
5
6
7
8
9
10
11
12
13
14
15
16
17
18
19
20
21
22
23
24
25
26
27
28
29
30
31
32
33
34
35
36
37
38
39
40
41
42
43
44
45
46
47
48
49
50
51
52
53
54
55
56
57
58
59
60
61
62
63
64
65

1
2
3
4
5
6
7
8 mud volcanoes. Our inferences based on mud level relationships to mud extrusion dynamics can be applied to
9 lower risk in other mud volcanoes areas of the world with high geo-tourist visits, such as those of Trinidad,
10 Azerbaijan, and Colombia.

11
12 **Keywords:** mud volcanism; aquifer; mud level; mud flow dynamics; Nirano *Salse*.

13 14 15 **1. Introduction**

16 Mud volcanoes are broadly distributed throughout the globe, both on land and below the seas (Milkov 2000,
17 2005). In the last few decades mud volcanism has been widely investigated from geological, geophysical, and
18 geochemical perspectives with important implications in energy resource exploration, seismicity, geo-hazard,
19 and greenhouse gas emissions (Mazzini and Etiope 2017). Mud volcanoes form through a combination of
20 gravitative instability, due to the overall low density of clay-bearing strata on surrounding units, and fluid
21 overpressures, which can develop both in the same strata or in surrounding sedimentary rocks, shales, and
22 reservoir rocks (Kopf 2002; Revil 2002). Hydrofracturing, due to the increase of fluid pressure or tectonic
23 stresses, fault reactivation and seismicity, allows for the pressurised gas-water-sediment motion towards the
24 surface and the brecciation of sedimentary units (Mazzini and Etiope 2017). The manifestation to the surface
25 can happen via progressive and slow release of mud and fluids, or in violent and explosive forms (Mazzini et
26 al. 2021). The sudden violent forms of mud eruptions may have serious consequences for the life of nearby
27 visitors. In 2014, two young children were killed by the unexpected eruption of a mud volcano at the *Macalube*
28 *di Aragona* (Agrigento, Sicily - Italy); legal consequences and responsibilities for this event are still being
29 discussed in the Italian Court of Justice ([https://www.ansa.it/sicilia/notizie/2018/01/30/esplosione-vulcanelli-
30 6-anni-a-fontana_51897811-841d-4e0a-835b-1727cdb322a2.html](https://www.ansa.it/sicilia/notizie/2018/01/30/esplosione-vulcanelli-6-anni-a-fontana_51897811-841d-4e0a-835b-1727cdb322a2.html); consulted 15/05/2022;
31 [https://www.agi.it/archivio/storico/small_volcano_erupts_in_sicily_killing_two_children-15620/news/2014-
32 09-27/](https://www.agi.it/archivio/storico/small_volcano_erupts_in_sicily_killing_two_children-15620/news/2014-09-27/); consulted 17/05/2022).

33
34
35
36
37
38 Mud volcanoes are peculiar natural features that have always attracted visitors in different contexts, such as
39 cultural (geo-tourists), recreational (mud bathers), and religious (worshippers) settings. Geo-tourists interested
40 in visiting mud volcanoes are numerous in Italy (*Salse di Nirano*, *Macalube di Aragona*, *Salse di Montegibbio*,
41 etc.), Azerbaijan, Georgia, Turkmenistan, and Indonesia with visitations in the hundreds of thousands.
42 Recreational mud bathing exploiting the allegedly beneficial properties of mud for the skin is popular in
43 Trinidad, Colombia (Cartagena, *El Totumo*), and Azerbaijan (*Alal*); the quiet *salse* mud pools are the preferred
44 locations for these mud bathers. Religious significance is associated with mud volcanoes in many parts of the
45 world: Hindus pilgrimage to the Chandrakup mud volcano in Pakistan and the Balka Devi in Trinidad. Famous
46 is the temple of fire worshippers Ateshgah, which is located 30 km from Baku and was revered at different
47 times by Zoroastrians, Hindus, and Sikhs. This territory is known for burning natural gas outlets associated
48 with mud volcanoes (Gamkrelidze et al. 2021). Site safety where frequentation is high require knowledge of
49 the potential for sudden gas/mud eruptions and the shallow structure of the pipes-conduits system in proximity
50
51
52
53

Commented [A5]: It is not clear why this is important.

Commented [A6]: In the following we have added some sentences about the importance

1
2
3
4
5
6
7
8 to the mud volcanoes, which may also be prone to sudden cave in and soil liquefaction to a distance of a few
9 meters from the mud pool.

10
11 In the literature, however, not much attention has been given to the shallow structure of a mud volcano
12 apparatus. Summit calderas have been described by several authors such as Fowler et al. (2000) in the Shah
13 Deniz of the Caspian region and Evans et al. (2008) in the South Caspian Basin. A comprehensive model for
14 a “mud volcano system evolution” has been presented by Stewart and Davies (2006). In their model, by means
15 of seismic data analysis, they describe the growth and set of structures associated with a large mud volcano in
16 the South Caspian Basin, which they assimilate to volcanic complex with associated radial and cylindrical
17 dikes, circular faults, and vertical pipes creating a densely intruded zone where the volcano will develop. Wall
18 rock erosion and compaction of the intruded zone leads to the collapse of a downward-tapering cone
19 enveloping the cylindrical zone, capped by ring faults that define a km-scale caldera that downthrows the
20 overlying mud volcano (Stewart and Davies 2006). While the model of Stewart and Davies (2006) is at the
21 spatial scale of the “mud volcano system” (~ 100-1000 m), given it has been acquired by seismic data
22 interpretation, our model is focused on a spatial scale which is about two order of magnitude smaller (~1-10
23 m). Accordingly, the novelty of our model is that we can study mud flow dynamics and conduits-shallow
24 reservoirs plumbing system at small-scale and with more detail, being the system mostly concerned with 2-10
25 m wide gryphons and mud pools.
26
27
28
29

30 The mud volcanoes of Italy are clustered in four main geographical zones: in northern Apennines (mainly in
31 the Emilia-Romagna Region); in central Apennines (Marche and Abruzzo Regions); in southern Apennines
32 (in Basilicata, Calabria, and Campania Regions), and in Sicily (Gattuso et al. 2020). Italian mud volcanoes are
33 typically small (area < 500 m²), low-lying (only 5% exceed 2 m in height), and characterized by the continuous,
34 but relatively quiet expulsion of gas, water, and mud. Martinelli and Judd (2004) ascribed most of their
35 formation to tectonic compression in areas with thick sedimentary sequences. The fluids rise from considerable
36 depth within these sedimentary sequences as consequence of overpressure and tectonic stress, possibly aided
37 by the loss of density associated with gas generation (Martinelli and Judd 2004). Specifically, in the northern
38 Apennine foothills near *Fiorano Modenese* a 4-km-long mud volcanoes belt is currently active and located in
39 the Regional Natural Reserve of Nirano *Salse* (Modena, Emilia-Romagna Region) (Capozzi and Picotti 2002;
40 Bonini 2012; Borgatti et al. 2019). This area has been widely studied since the Reserve was established in
41 1982. Several studies focused on the structural geological setting of the area to explain relationships between
42 mud volcanism and active tectonics (Capozzi and Picotti 2002; Bonini 2008), as well as between mud
43 volcanism, fluid venting, and fault/fracture zones (Bonini 2007). Seismic and geo-electrical investigations
44 were carried out to detect the sub-vertical structures of the superficial outlet of the volcanic conduits and
45 chimneys (Accaino et al. 2007; Lupi et al. 2016). Micropaleontological studies on cones, level-pool mud vents,
46 and mud flows were used to identify the fluid source and reservoirs depths (Papazzoni 2017). Several
47 geochemical studies were carried out to characterize the fluid venting, deep fluid compositions, origin of these
48 fluids, and verify the possible contribution of meteoric water (Boschetti et al., 2011; Conti et al., 2000;
49
50
51
52
53

Commented [A7]: Reference needed.

Commented [A8]: Reference added

1
2
3
4
5
6
7
8 Martinelli et al., 2012; Mattavelli et al., 1983; Mattavelli and Novelli, 1988; Minissale et al., 2000; Oppo et
9 al., 2017, 2013); extensive geochemical soil gas survey and exhalation fluxes (CO₂ and CH₄) were also carried
10 out in the mud volcano field (Sciarrà et al. 2019) to show geochemical anomalies that would indicate the
11 presence of high permeability conduits and preferential leakage pathways for the gas migration.
12

13 To the best of the authors' knowledge a detailed hydrogeological characterization of the Nirano area **has not**
14 **been attempted with our novel approach, yet.** Mud pool levels, as well as conduits connections have been
15 explained so far in terms of overpressured fluids that are periodically expelled from the main deep reservoir
16 by the creation or the reactivation of pre-existing fractures/faults or pipes, without considering the
17 hydrogeological aspects. Bonini (2007) stated that, most likely, the persistent mud extrusion could be due to
18 short-lived escape of overpressured fluids along permeable structures connecting the reservoir(s) to surface.
19 In this context, our paper aims at understanding the fluid dynamics **and the connection of conduits and shallow**
20 **aquifer-reservoirs to assess eventual elements of risk.** First, we focus on the review of previous integrated
21 geophysical, morphological, and structural geological studies carried out in the study area (Section 2). Then,
22 insights on hydraulic connectivity and the effect of a variable mix between gas and mud on fluid dynamics are
23 achieved by continuous monitoring of mud levels and chemical-physical parameters in several conduits,
24 measurements of gas bubbles frequency, as well as mud grain size analysis and density determinations (Section
25 3). Results are then discussed, and a conceptual model related to the presence of shallow small fluid-saturated
26 aquifers in which gas is temporarily stored during its ascent from the deepest reservoirs, before the final
27 emission, is presented (Sections 4 and 5). **We believe that these latter results are very important for assessing**
28 **the geosite safety in proximity to the mud volcanoes and the potential for abrupt eruptions not only at Nirano,**
29 **but also in other mud volcano areas of the world (Gamkrelidze et al. 2021).**
30
31
32
33
34
35

36 2. Study area characterization

37 2.1. Morphology

38 The Regional Nature Reserve of the Nirano *Salse* is located at the edge of the Northern Apennines (Modena,
39 Italy), an area that is characterized by several active fluid vents (Figure 1).
40
41

42 With a surface of approximately 75,000 m², Nirano is one of the largest mud volcano areas of Italy **and Europe,**
43 **as well as one of the most visited (more than 30000 visitors each year).** It is situated at the bottom of a caldera-
44 like structure within a hilly landscape. The oval depression (caldera) is interpreted to be the result of the
45 gravitational collapse of a mud diapir top, which broke to the surface within the Plio-Pleistocene succession,
46 due to degassing, emissions of mud and fluid, and emptying of mud chambers (Bonini 2008).
47
48

49 **There are several individual active cones, gryphons, and subcircular pools distributed at the base of the caldera**
50 **within an area of recently extruded mud that has not been vegetated yet. The specific number and location of**
51 **the cones vary over time as the area constantly evolves. Volcano morphology at the site depends mostly on the**
52 **characteristics of extrusion style (abrupt Strombolian-type eruptions forming gryphons), persistence of**
53
54
55
56
57
58
59
60
61
62
63
64
65

Commented [A9]: Can they also be discussed in the wider context of mud volcano areas? What are the broader implications?

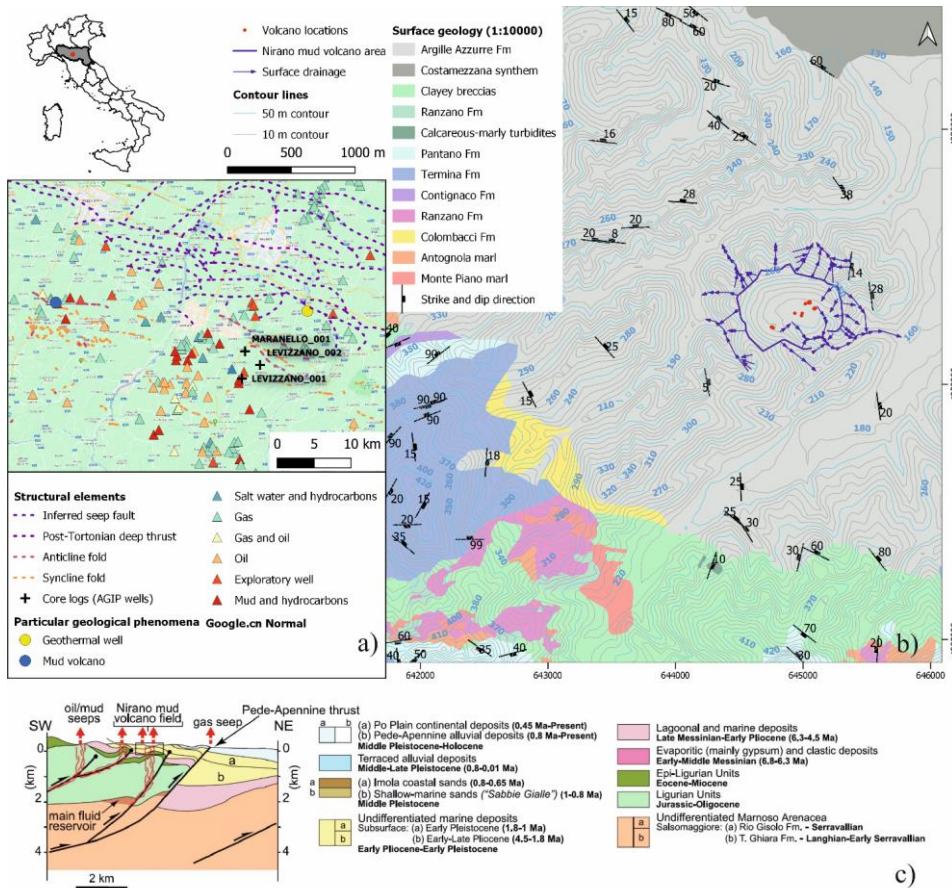
Commented [A10]: We have explained in the sentence below and added a whole section to the introduction to broaden the implications of our work.

Commented [A11]: Is this needed?

Commented [A12]: Sentence changed

degassing produced by the rising to the surface of salty and muddy water mixed with gas (mostly CH₄), and connection with groundwater aquifers (mud pools) (Onderdonk et al. 2011).

The largest cones have a basal diameter of about 4-5 m, a rim with a diameter of 0.2-2 m and, a height of 2-3 m above ground; they intermittently emit gas bubbles and muddy water in variable flow rates. Generally, there is a continuous supply of small bubbles (about a few centimetres in diameter), but their frequency may vary and every few minutes larger bubbles break the surface. The main Nirano mud volcano emits an estimated 100 to 300 m³ of gas per day (Martinelli and Rabbi 1998). According to Oppo et al. (2013), the volume of emitted fluids varies significantly from well-developed mud volcanoes to gryphons, and mud pools. In the first case, the slow dense mud generated by abrupt eruptions runs down the sides of the cones, dries out, and increases the steep slopes of the structure; in the second case, mud pools seem to contain less viscous mud and have a more abundant and continuous emission of saline water and gas.



1
2
3
4
5
6
7
8 *Figure 1 – Location of the Nirano Salse study area. a) The geological phenomena and historical hydrocarbons*
9 *vents occurred in the surrounding area; b) surface drainage basin of Nirano, contour lines, and the surface*
10 *geology modified from the Emilia-Romagna survey geology map, scale 1:10000. (Coordinate reference*
11 *system: WGS 84/UTM Zone 32N). Blue lines with arrows indicate the drainage network in the Nirano area;*
12 *c) geological section map modified from Bonini (2007).*

13 14 2.2. Mud characterization

15 Our observations and measurements with an electrical conductivity (EC) meter and gas accumulation chamber
16 connected with a spectrometer show that fluid venting at the surface consists of a mixture of cold clay mud,
17 brackish water, gas mixtures dominated by methane and sometimes CO₂, liquid hydrocarbons, and peat
18 fragments from levels encountered during fluid's ascent (data under publication). The mud extrusion is driven
19 by the adiabatic expansion of methane during the ascent and the consequent decrease in the fluid density
20 compared to the surrounding rocks (Mattavelli et al. 1983; Mattavelli and Novelli 1988; Martinelli et al. 2012),
21 and the increase in overpressure where gas accumulates (bottlenecks in the conduits and reservoirs).

22
23
24 The saline composition, δD and δ¹⁸O signatures indicate that part of the waters originates from marine connate
25 pore waters entrapped in the Miocene and Plio-Pleistocene sediments during marine deposition, with no
26 contamination from recent meteoric water (Conti et al. 2000; Minissale et al. 2000; Martinelli and Judd 2004;
27 Heller et al. 2011; Oppo et al. 2013). Geochemical analyses, of both water and gas samples, show that the gas
28 contained in these reservoirs is mainly a mixture of primary and secondary thermogenic gases (due to thermal
29 cracking of oil), and secondary biogenic methane (due to biodegradation of oils), with minor condensates and
30 oil (Tassi et al. 2012; Oppo et al. 2017). Several authors (Mattavelli et al. 1983, 1993; Riva et al. 1986;
31 Martinelli et al. 2012) recognize that in this region of the Northern Apennines, the hydrocarbons (gas and oil)
32 originate in the turbiditic sequences of the Tertiary *Marnosa Arenacea* Fm. Micropaleontological analysis on
33 cones, level-pool mud vents, and mud flows, however, indicated homogeneous fossil assemblages, all
34 consistent with the Plio-Pleistocene age of the *Argille Azzurre* Fm (FAA) (Papazzoni 2017) (Figure 1b).

35
36
37 More recent data suggest that a common source rock responsible for the generation of these hydrocarbons
38 could be located at greater depth than the Tertiary reservoir units (Capozzi and Picotti 2002, 2010; Picotti et
39 al. 2007; Bonini 2009; Oppo et al. 2013).

40 41 42 43 44 2.3. Structural geology

45 The Nirano area has a typical badland morphology due to the outcrops of the *Argille Azzurre* Fm (Figure 1b),
46 composed of fine-grained sediments of Pliocene to Pleistocene age. The study site is 4 km south of the main
47 seismogenic Pedea pennine thrust (Figure 1a) and Bonini (2008, 2009) maps a NW-SE oriented anticline axis
48 dividing in half the geomorphological bowl (caldera) where the gas emissions are active today (Figure 1b).
49 Current seismicity in the area is due mainly to thrust (Magnitudes 3.0 to 4.0) and strike-slip faulting
50 (Magnitudes 3.5-5).

Commented [A13]: How is this known? Is there a reference?

Commented [A14]: These are our observations.

1
2
3
4
5
6
7
8 The Nirano mud volcanoes are interpreted to be just above a NW-SE blind thrust anticline (Bonini 2008, 2009,
9 2012). The gas emissions would be the surface expression of fluids escaping from a deep leaky reservoir (about
10 1.5 km depth) located in the *Marnoso Arenacea* Fm, and eventually from shallower (400-500 m from the
11 topographic surface) reservoirs located in permeable Epiligurian units of Eocene-Miocene Age (Bonini 2007,
12 2008). Any gas accumulation within a subsurface reservoir would increase the pore pressure due to buoyancy
13 (Dasgupta and Mukherjee 2020); if the sealing unit is of poor quality, the gas may rise towards the surface
14 either following faults and fracture zones or fingering through poorly consolidated mud sediments.

15
16 The mud volcanoes are roughly oriented along a NE-SW trend (Figure 1a and Figure 2), which correlates with
17 the direction of maximum horizontal in-situ stress (S_H) due to Apennine shortening. Bonini (2009, 2008)
18 interprets both the alignment of the mud volcanoes and the shape of the geomorphological bowl as the result
19 of the in-situ stress conditions present in the *Nirano* area.
20
21
22
23

24 2.4. Source of fluids

25 The source of fluids (gas and water) for mud volcanoes, in particular at the *Nirano Salse* site, is a matter of
26 debate. According to Kopf (2002) the possible fluid sources for overpressuring and mud extrusion can be
27 summarized as: (1) pore fluids from compaction; (2) biogenic methane from degradation of organic matter;
28 (3) fluid migration along deep-seated thrusts; (4) thermogenic methane; (5) fluids from mineral dehydration;
29 (6) hydrothermal fluids, and alteration of crustal rock; (7) fluid expulsion from internal deformation within the
30 diapiric intrusion. By reviewing the abovementioned mechanisms for the *Nirano Salse*, we can argue that: (1)
31 fluid expulsion during compaction has already occurred at Nirano, because the *FAA* already went through
32 primary compaction; (2) biogenic methane from degradation of organic matter is not supported by the
33 geochemical isotopic characteristics of the gas analyzed (Martinelli et al., 2012); (3) fluid migration along
34 deep-seated thrusts is possible for the gas (deep source of Martinelli et al., 2012); furthermore, there might
35 have been mixing between deep connate and shallower aquifer waters; (4) the methane is of thermogenic origin
36 as suggested by Oppo et al. (2017), Martinelli et al. (2012), and Tassi et al. (2012); (5) there are only traces of
37 smectite in the Nirano mud suggesting no dehydration reactions involving opal-smectite reactions to cause
38 overpressures (Vezzalini et al., 2017); (6) fluids in Nirano do not have hydrothermal characteristics (Martinelli
39 et al., 2012); (7) fluid expulsion from internal deformation within the diapiric intrusion does not fit well Nirano
40 *Salse* dynamics and formation given that the gas source is below the *FAA*. Furthermore, mud diapirs are
41 interpreted today as areas of seismic attenuation caused by intrusion of mud dike swarms formed by
42 hydrofracturing due to overpressures (Figure 1c) and not by the density driven phenomena of viscous flow that
43 are typical of salt diapirs (Tingay et al. 2009).
44
45
46
47
48

Commented [A15]: Why is this important?

Commented [A16]: This is important to explain the possible ascent of thermogenic gas from depth

Commented [A17]: This reads as a large section of literature – Can this be included in the literature review? It does not link directly to the results.

Commented [A18]: Ok, we have done this.

2.5. Fluid Migration Model

Bonini (2008) presents a geological model where pressurized fluids move up through discontinuities in the Ligurian Units, and accumulate in shallower reservoirs controlled by the lithological boundary between the impermeable claystone *FAA* and the underlying, more permeable, Epi-Ligurian Units and *Colombacci* Fm deposits. Bonini (2007) stated that anticlines in combination with the brittle structures associated with folding provide an efficient system for trapping and transferring fluids to the surface, where overpressured fluids are periodically expelled from the main reservoir (*Marnosa-Arenacea* Fm) through the creation or the reactivation of pre-existing fractures/faults (Figure 1c). Permeability contrasts, tectonic loading and gas generation likely represent the main factors triggering fluid overpressures (Bonini 2007). Vannoli et al. (2021) suggest that a seal-bypass system, such as extrados fracture corridors developed along the fold crest, is needed to allow fluids to reach the surface. Furthermore, they claim that mud volcanoes can persist if they are connected by a network of deep long-lived structures possibly associated with background seismicity.

3. Methodology

3.1. Mud monitoring and analysis

Two mud pools and two small gryphons were equipped with level-loggers LTC Solinst to monitor mud hydrostatic pressure, temperature (T), and electrical conductivity (EC) at different time intervals (every second for a total of 4.5-hour monitoring, and every 5 minutes) (Figure 2). The probes were installed at different depths as reported in Table 1. The time series collected ranges from July 7, 2020, to January 7, 2021. The hydrostatic pressure data measured by the divers were converted into mud levels by using the following equation 1 and atmospheric pressure data recorded by the weather stations of Vignola (Modena) and available from the Regional Agency for Prevention, Environment, and Energy of Emilia-Romagna (ARPAE website; <https://simc.arpae.it/dext3r/>) (Figure 3).

$$MC = 9806.65 \frac{P_{diver} - P_{baro}}{\rho g} \quad (1)$$

where MC is the mud column above the diver (m), P_{diver} is the pressure exerted by the mud column and recorded by the diver (m H₂O), P_{baro} is the atmospheric pressure (m H₂O), g is the acceleration of gravity (m/s²), and ρ is the mud density (kg/m³).

The mud level (ML) in relation to the vertical reference datum (mean sea level, m.s.l.) is as follow:

$$ML = TOC - CL + MC \quad (2)$$

where TOC is the elevation of the mud pool rim in which the diver was installed (m a.s.l., Table 1), and CL is the cable length (m, Table 1).

Electrical conductivity values (mS/cm at 25°C) were converted into salinity (g/L) using the conversion formula of Lewis and Perkin (1981).

Commented [A19]: Difficult to understand what novel information this study is bring. The discussion starts as a literature review.

Commented [A20]: We have separated this information that refers to inferences made by others from our interpretation that is presented further down in the discussion. We have moved this part from discussion to here.

Commented [A21]: Should this be groundwater levels or mud levels?

Commented [A22]: Ok corrected. Mud levels

1
2
3
4
5
6
7
8
9
10
11
12
13
14
15
16
17
18
19
20
21
22
23
24
25
26
27
28
29
30
31
32
33
34
35
36
37
38
39
40
41
42
43
44
45
46
47
48
49
50
51
52
53
54
55
56
57
58
59
60
61
62
63
64
65

To highlight hydraulic connectivity between volcanoes, variance of daily mud level (*ML*) elevation with respect to the mean mud level within the period of data analysis, as well as correlation coefficients between the monitored parameters (such as *ML-Patm*; *ML-EC*; *ML-T*; *Patm-EC*) and between mud volcanoes were calculated.

Mud level measurements were calculated as hourly averages to evaluate the barometric efficiency and describe how mud levels in the volcanoes fluctuate in response to atmospheric pressure. We used the slope method with mud level change (ΔML) on the y-axis and barometric pressure change (ΔB) on the x-axis (Hare and Morse 1999; Gonthier 2007). Measurable ΔML is the mud level (*ML*) in the volcano at time ($t + 1$) minus the mud level in the volcano at time (t):

$$\Delta ML = ML(t + 1) - ML(t) \tag{3}$$

while ΔB that causes the mud-level change (ΔML) is measurable as the barometric pressure at time (t) minus the barometric pressure at time ($t + 1$):

$$\Delta B = B(t) - B(t + 1) \tag{4}$$

The order of time (t) and time ($t + 1$) in (3) is inverted with respect to (4) to follow the convention that ΔB is negative for an increase in barometric pressure during a time interval.

Commented [A23]: Is this mud levels?
Commented [A24]: Ok corrected. Mud levels

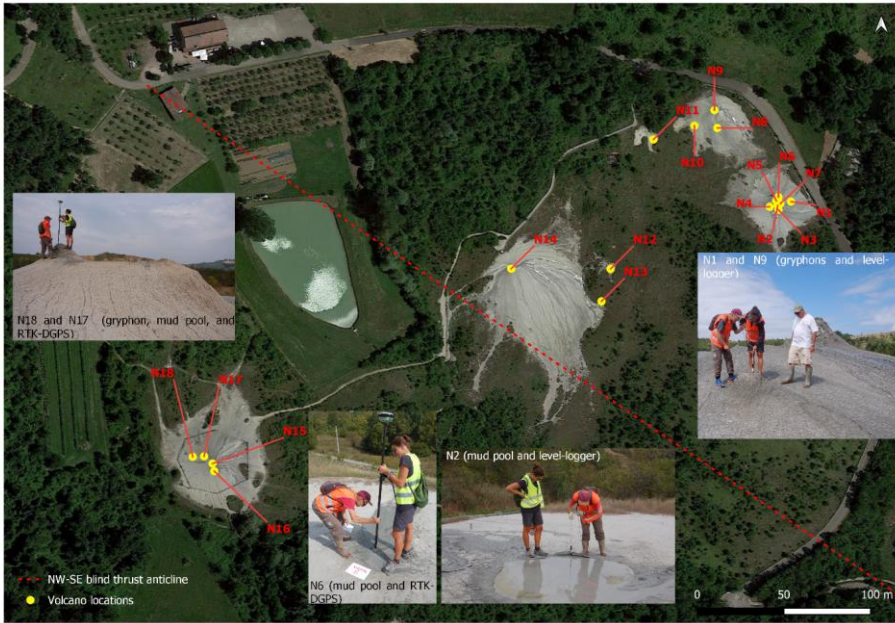


Figure 2 - Nirano Salse area and location of gryphons and mud pools. Shown are also some pictures of the field activities (GPS surveys and installation of level-loggers). The dashed red line is the blind thrust anticline axis (as interpreted by Bonini 2007).

Table 1 – Dates and time intervals of mud monitoring. Shown are also logger depths (m below the ground – m b.g.) and altimetry (m a.s.l.). Gray cells mean that data are available in that period; white cells mean that data are not available. Refer to Figure 2 for the mud pools locations.

Mud pool or gryphon name	Altimetry (m a.s.l.)	Depth (m b.g.)	1-second interval	5-minute interval		
			7/07/2020	7/07/2020 – 10/09/2020	10/09/2020 – 12/11/2020	12/11/2020 – 7/01/2021
N1	206.74	-3.00				
N2	207.41	-0.62				
N3	207.41	-3.00				
N8	207.62	-3.00				

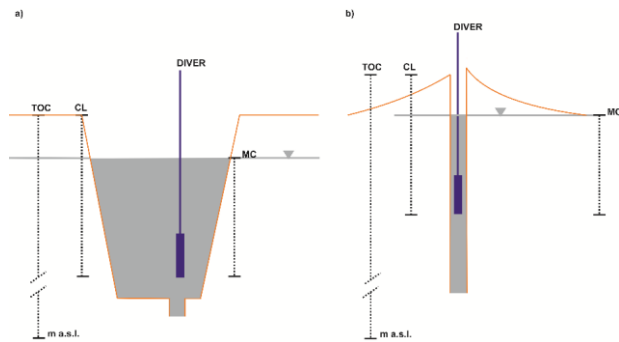


Figure 3 – Schematic representation of the diver installation in a mud pool (a) and in a gryphon (b).

3.2. Fluid characterization

To characterize the fluid, a total of 22 mud samples (500 ml) were collected in N1, N2, and N3 (Figure 2) and mud densities were measured in the laboratory using an electronic scale and graduated beaker.

Mud samples were also analysed for grain size. The samples were wet sieved with a 63 µm clear sieve to separate the muddy from the coarser fraction. The fraction retained by the sieve was dried in a natural convection oven at a temperature of 105 °C. The coarse fraction was subjected to analysis by sieving in the dimensional range between 8000 µm (-3 φ, Krumbein φ scale; Krumbein, W. C. 1934) and 63 µm (4 φ) using a battery of American Standard Test Sieve Series (ASTM) sieves with a particle size range of 1/2 φ and a vibro-tilting sieve. The passer-through (muddy fraction) was measured by aerometry, which correlates the size and percentage of particles suspended in the liquid with their sedimentation rate, based on specific weights of the liquid and particles themselves. The particle size distribution was reconstructed by software Gradistat v.

8.0.

10

1
2
3
4
5
6
7
8
9
10
11
12
13
14
15
16
17
18
19
20
21
22
23
24
25
26
27
28
29
30
31
32
33
34
35
36
37
38
39
40
41
42
43
44
45
46
47
48
49
50
51
52
53
54
55
56
57
58
59
60
61
62
63
64
65

Topographic surveys were carried out during the monitoring campaigns using a real-time kinematic differential global positioning system (RTK-DGPS, Figure 2) with the aim of referring the rims and the mud level of the main gryphons and mud pools, as wells as the volcano field, to the mean sea level (m a.s.l.). Moreover, the conduit depths of the main mud pools and gryphons were measured by lowering a stainless-steel cylindrical weight down the conduit until progression was stopped.

The frequency and diameter of gas bubbles in **eighteen mud pools and gryphons** were visually counted and measured with a stopwatch, by photographs and video recordings; the average gas flow rates and hydraulic heads were compared with the aim of identifying the presence of gas bearing aquifers at different depth.

Finally, **all data were collated with regard to** geological information available for the area, such as penetrometer, cores, and well logs data available from the archive of the ViDEPI project database (<https://www.videpi.com/videpi/videpi.asp>) concerning Italian oil exploration within the National Mining Service for Hydrocarbons and geothermal energy of the Italian Ministry for Economic Development (UNMIG). The well logs considered for the present study are: Levizzano 1, Levizzano 2, and Maranello 1 (Figure 1a), which were drilled in the 1960s by former Agip S.p.A. (now Eni S.p.A.), the Italian multinational energy company.

4. Results

Figure 4 reports the time series measured **at 5-minute intervals at locations N1 (a), N2 (b), N3 (c) and N8 (d)** (Figure 2). For N2, only the data acquired in the largest time window are shown (see Table 1).

To better understand the behavior of the signals (Figure 4) on long (weeks - months) time scale, we removed the high frequency noise by applying a Gaussian moving average filter on the raw time series of *ML*, *T*, and *EC*. In order to have a uniform dataset, the time series of atmospheric pressure (1 data point per hour) were re-sampled, with a linear interpolation, at the same time-step of the measured time-series (1 data point per 5 minutes). The noise filtered out from Figure 4 is shown in Figure 5. The *EC* sensor in the divers **takes maximum two days** to adjust to an *EC* value with a precision of 0.1 mS/cm as apparent in Figure 4c. A sudden drop in mud level (about 0.2 m) occurs at N3 (Figure 4c) around 10/27/2020 without any change in P_{atm} , *T*, and *EC*. **There is another sudden drop of mud level at N8 (Figure 4d) at the beginning of December, where mud level and EC drop (-0.2 m and 7 mS/cm, respectively); no correlation is shown with N3.**

The high frequency noise (Figure 5) is due to bubble activity (the bubble flowing next to the sensor causes a change in pressure; the more bubbles, the more activity) and it is the largest in **N1 (amplitude of about 0.3 m)**, which has always been one of the most active (in terms of gas bubble emissions) gryphons during the monitored interval. In general, the noise is low at N1, N2, and N3 until September and it is high in the period September-October (Figure 5).

Commented [A25]: Can this be more specific?
Commented [A26]: Ok we have specified the number of measurements.

Commented [A27]: Should this be collated with?
Commented [A28]: Ok, we have changed this.

Commented [A29]: 2 to 3 days?
Commented [A30]: 2 days

Commented [A31]: Why is this important?
Commented [A32]: We wanted to highlight the lack of correlation

1
2
3
4
5
6
7
8
9
10
11
12
13
14
15
16
17
18
19
20
21
22
23
24
25
26
27
28
29
30
31
32
33
34
35
36
37
38
39
40
41
42
43
44
45
46
47
48
49
50
51
52
53
54
55
56
57
58
59
60
61
62
63
64
65

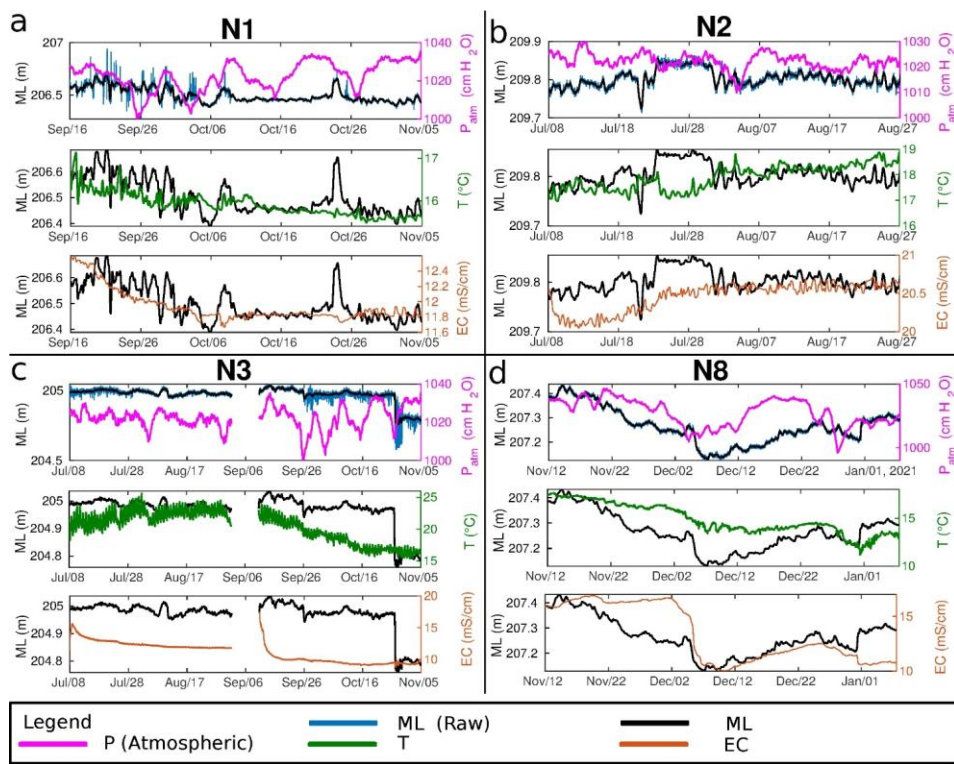


Figure 4 - Time series measured with a 5-minute interval in four distinct locations: N1 (a), N2 (b), N3 (c) and N8 (d). For N2, only the data acquired in the largest time window are shown (see Table 1). The time series of ML (black line), atmospheric pressure (magenta line), measured temperature T (green line) and electrical conductivity, EC (orange line) are reported in each panel.

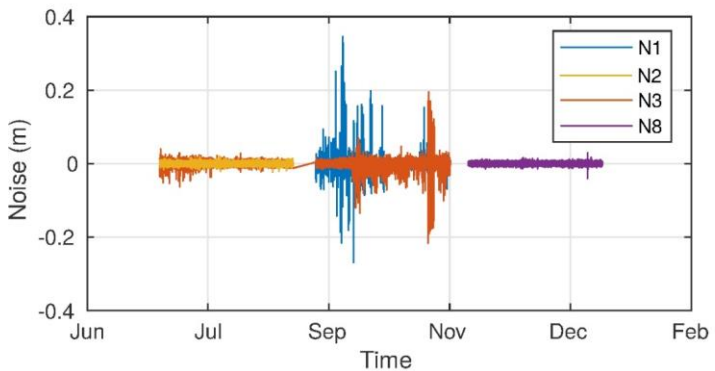


Figure 5 - Plot of the noise of the ML time series, computed as $N = ML(raw) - ML(filtered)$ for the 4 distinct locations, N1, N2, N3, and N8.

The correlation coefficients of mud level, EC, T, Patm of monitored volcanoes are listed in Table 2. Within the 1-second dataset, the highest value is between N1 and N2 (0.8), while the lowest is for N2 and N3 (0.54), which are the closest pools. Correlation values decrease if the 5-minute dataset is considered, with no correlation for N2-N3 (0.06) and good correlation for N1-N3 (0.5).

Correlation coefficients calculated on 1-second mud level dataset (Table 2) show high values due also to the short interval (about 0.5-1 second) between sampling frequency and gas bubble frequency in the conduit. The correlation coefficients for the 5-minutes mud level dataset show good correlation between N1 and N3, while it is lower between N2 and N3.

Mud in all volcanoes show no correlation between *ML* and *EC* except in N1, which has good correlation (0.58).

In the whole database, EC ranges between 9 and 20 mS/cm, with average values of 14.2 mS/cm.

Table 2 – Correlation coefficients of mud level (*ML*), electrical conductivity (*EC*), temperature (*T*) and atmospheric pressure (*Patm*) between the monitored volcanoes (N1, N2, and N3) at different time intervals (1-second, and 5-minute). 'n.a.' is for 'not available data'.

	<i>ML</i>			
	1-second interval	5-minute interval		
N1-N2	0.80	n.a.		
N1-N3	0.70	0.50		
N2-N3	0.54	0.06		
	<i>ML-Patm</i>	<i>ML-EC</i>	<i>ML-T</i>	<i>Patm-EC</i>
	5-minute interval			
N1	-0.002	0.58	0.60	0.11
N2	-0.01	0.15	-0.26	-0.26
N3	0.12	0.37	-0.12	0.33

The daily mud level variance within the periods of data analysis in N1, N2, and N3 is shown in Figure 6. The graphs show variance peaks in different dates for each monitored mud pool. In N1 the maximum variance values are on 09/21 and 10/23, with *ML* variance values of 0.01 and 0.005 m², respectively (6a). In N2, the maximum variance values are 0.0015 and 0.0005 m² on 07/21 and 07/31, respectively (Figure 6b). In N3, the maximum variance values are recorded on 08/10 (0.0005 m², Figure 6c), and on 10/27 (0.009 m², Figure 6d).

1
2
3
4
5
6
7
8
9
10
11
12
13
14
15
16
17
18
19
20
21
22
23
24
25
26
27
28
29
30
31
32
33
34
35
36
37
38
39
40
41
42
43
44
45
46
47
48
49
50
51
52
53
54
55
56
57
58
59
60
61
62
63
64
65

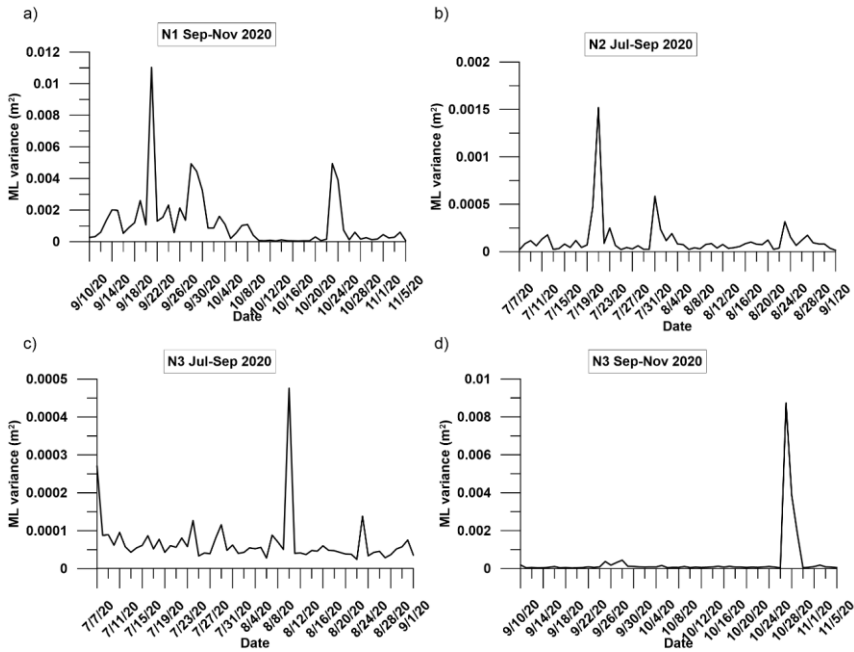


Figure 6 – Variance of daily mud level (ML) within the periods of data analysis for pools N1 (a), N2 (b), and N3 (c-d).

Figure 7 shows the barometric efficiency calculated for N1, N2, N3 and N8. Figure 8 and Figure 9 show gas flow rates and mud level in all gryphons and mud pools presenting gas emission. In Figure 8, mud level and gas flow are grouped based on their location (refer to Figure 2). The highest flow rate is recorded in N14 with 0.0013 m³/sec, followed by N1 and N2 (0.0012 and 0.0010 m³/sec, respectively), while N4 and N5 present no gas bubbles (Table 1 in Supplementary Material). In Figure 9, mud level and gas flow data highlight two main groups: N1-N14 on the Eastern, and N15-N18 on the Western side of the Nirano Salse.

1
2
3
4
5
6
7
8
9
10
11
12
13
14
15
16
17
18
19
20
21
22
23
24
25
26
27
28
29
30
31
32
33
34
35
36
37
38
39
40
41
42
43
44
45
46
47
48
49
50
51
52
53
54
55
56
57
58
59
60
61
62
63
64
65

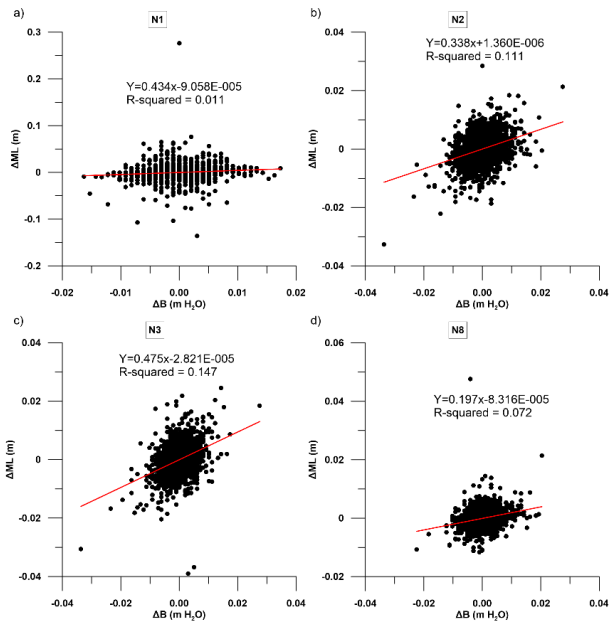


Figure 7 – Mud level change (ΔML in m) as a function of barometric-pressure change (ΔB in m of mud column) in volcanoes N1, N2, N3, and N8.

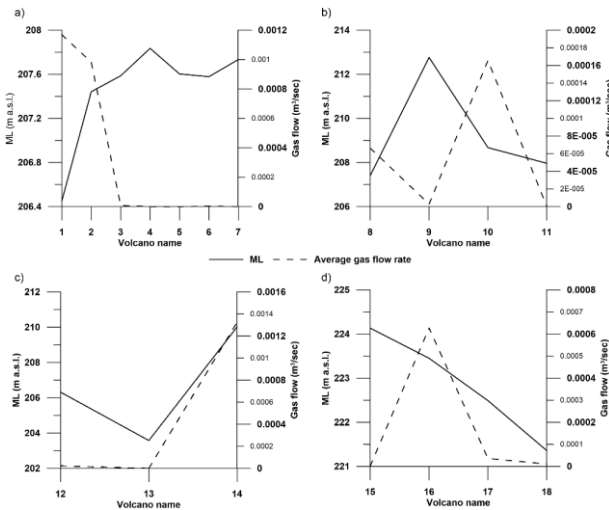


Figure 8 - Average gas flow rate and mud level (ML) in the mud pools of the three main zones of Nirano Salse: N1-N7 in the Eastern, N8-N11 in the Northern, N12-N14 in the central, and N15-N18 in the Western part of the study area (refer to Figure 2 for locations).

1
2
3
4
5
6
7
8
9
10
11
12
13
14
15
16
17
18
19
20
21
22
23
24
25
26
27
28
29
30
31
32
33
34
35
36
37
38
39
40
41
42
43
44
45
46
47
48
49
50
51
52
53
54
55
56
57
58
59
60
61
62
63
64
65

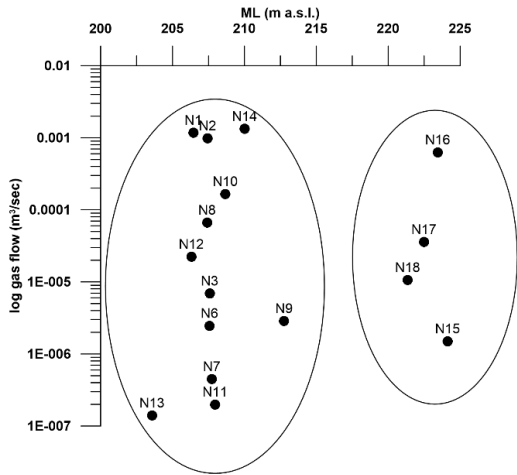


Figure 9 – ML values (m a.s.l.) and gas flow rate (m³/sec, log scale) distribution in all vents.

Regarding fluid characterization, the results of mud densities analysis are listed in Table 3. Mud density ranges from 1145 to 1350 g/l. To convert the hydrostatic pressure data measured by level-loggers into mud levels (1), we used the mud density value (1265.3 g/l), which was measured in N2, and it is consistent with an average value measured in N1, N2, N3, and N4.

The particle size distributions of mud samples are shown in Figure 10. All samples show similar grain size distribution and consist of clayey silt, with average values of 55.4 and 36.4% of silt and clay, respectively.

Table 3 - Mud density values collected in N1, N2, N3 and N4.

	N1	N2	N3	N4
	ρ (g/l)			
	1152	1220	1173	1350
	1152	1221	1160	
	1150	1251	1167	
	1156	1261	1165	
	1147	1264	1153	
	1147	1265	1160	
	1146	#	1166	
	1145	#	1156	
Min	1145	1220	1153	
Max	1156	1265	1173	
Mean	1149	1247	1163	

1
2
3
4
5
6
7
8
9
10
11
12
13
14
15
16
17
18
19
20
21
22
23
24
25
26
27
28
29
30
31
32
33
34
35
36
37
38
39
40
41
42
43
44
45
46
47
48
49
50
51
52
53
54
55
56
57
58
59
60
61
62
63
64
65

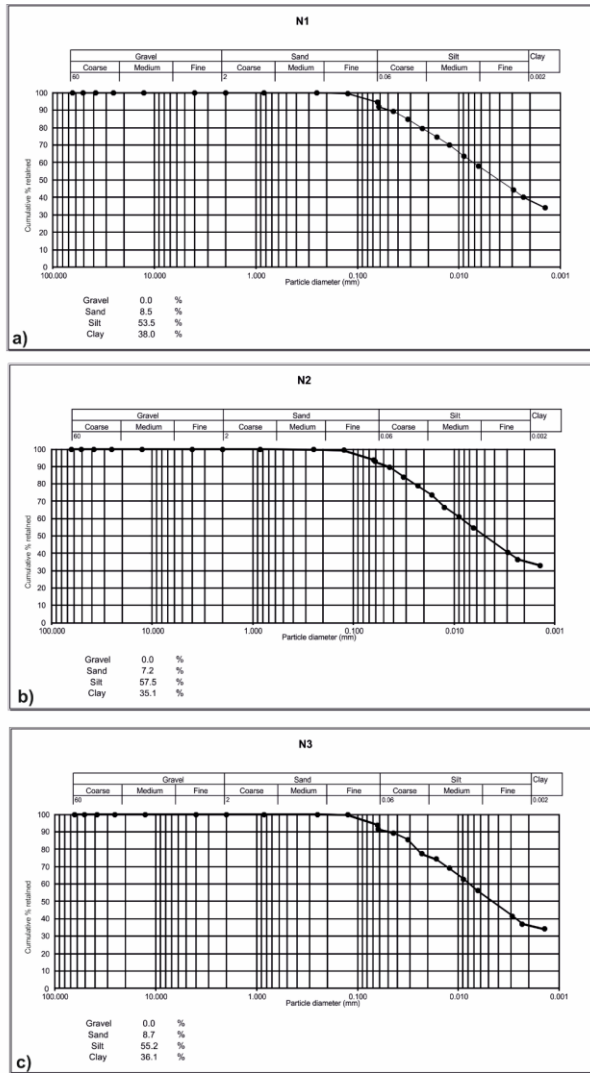


Figure 10 – Particle size distributions of mud samples collected in N1 (a), N2 (b), and N3 (c).

5. Discussion

Based on the results above, a conceptual novel model of flow dynamics is shown in Figure 11 and justified in the following discussion section.

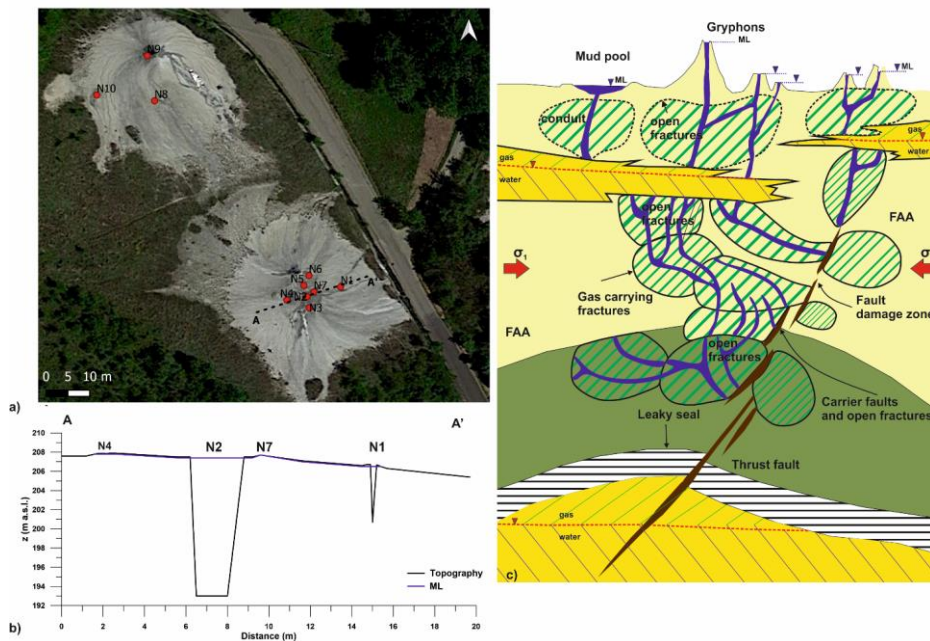


Figure 11 – Simplified conceptual model for flow dynamics at Nirano's gas seeps: (a) zoom of the Eastern part of the field with the related topographic profile and mud level (ML) (b); (c) conceptual model, ideally located across the area, showing both gryphon and mud pools: gas migrates through a leaky seal following initially open fractures in the damage zone of the fault and then moving along open fractures aligned in the maximum compressional stress direction (σ_1) – once the fractures intersect an aquifer, gas accumulates and it is released when overpressure exceeds the tensional strength of the sediment.

Our model, to the best of our knowledge, is the first to explain mud flow dynamics in the shallow subsurface (from the surface to several tens of meters) by seeking a connection between gas/fluid migration, mud levels in conduits, and shallow aquifers. From our data, we cannot focus on the deep migration routes and reservoir; for that we refer to the work of Bonini (2007, 2008). Nevertheless, our novel structural/aquifer connection model has some implications also for what proposed by Bonini (2007, 2008). Our data, in fact, suggest the presence of small shallow aquifers between 4-20 m depth where rising gas, from deep structures in the Epi-Ligurian units (Capozzi and Picotti 2010), is trapped and temporarily stored, so that deep fluid ascent is buffered in the shallow subsurface. In the present paper this process is recognized for the first time. The

18

Commented [A33]: Difficult to determine what are findings of the study and what are comments taken from previous studies in the literature

Commented [A34]: In the discussion and in the previous sections, we have highlighted the novelties of our flow dynamics model.

1
2
3
4
5
6
7 impermeable *FAA* (in which the shallow aquifers are encased) allows pore fluid pressure to build up till this
8 overcomes the tensional strength of the rock **at which point gas can** escape along fractures or fractures-aligned
9 pipe conduits, reaching the surface and dragging and fluidifying solid material along the way up (**Figure 11c**).
10 This flow dynamics allows both clay particles, gas, and eventually some silt (from the shallow aquifers) to rise
11 to the surface with formation of gryphons and mud pools. As most of the mud pools are located around the
12 gryphons, it is suggested that the overburden of the tall gryphons causes collapse and fracturing through which
13 the fluids migrate, mixing with shallow meteoric waters **similar to what proposed elsewhere by Mazzini (2009)**
14 **and Mazzini and Etiope (2017)**. Most of the gas is rising from deep reservoirs (gas dominated fluid) and,
15 perhaps, some deep connate water is carried along with the gas. The fluids reaching the surface may also mix
16 with brackish water, which is present in the shallow aquifers, and this justifies the EC values that we measured
17 in the field.

18
19
20
21 The presence of local shallow aquifers **is supported** by particle size distribution of mud samples collected in
22 the field (Figure 10) showing coarser granulometry than clay sediments. The presence of coarse sediments
23 (sand and silt) within *FAA* is also confirmed by the AGIP S.p.A. core logs near the study area (Maranello 001,
24 Levizzano 001 and 002, refer to Figure 1a for location) and the explanatory notes of the Geological Maps of
25 Italy (Scale 1:50000, Sassuolo sheet; RER, 1999). Here, the *FAA* is described as consisting of silty and slightly
26 marly clays, with a thin to medium stratification marked by intercalations of fine sands in flat, isolated, or
27 connected lenses. On the right of the Secchia River, where Nirano is located, the sandy levels become thicker,
28 laterally continuous and the stratification more powerful. Core logs show clays with frequent sandy and silty
29 intercalations within the first 100 m of the *FAA* sequence.

30
31
32
33 Sciarra et al. (2019), who carried out extensive geochemical soil gas and exhalation fluxes (CO₂ and CH₄)
34 surveys, indicate the presence of high permeability areas that act as preferential leakage pathways for gas
35 migration. These areas positively correlate with the dome-shaped conductive anomalies mapped by Lupi et al.
36 (2016) at 20 m depth. **We suggest that** these permeable areas are none other than shallow aquifers with variable
37 size and thickness possibly leaking to the surface along circular faults formed during the collapse of the area
38 and the formation of the caldera-like morphology (bowl). The salinity of the muds is low (around 7 g/l) and
39 correlates with the salinity of formation waters recovered during DST tests in the Levizzano 1 and 2 wells, as
40 well as Maranello 1 from sandy layers within the *FAA*. The mud reaching the surface also does not contain
41 any microfossil older than the age of the *FAA*, suggesting no direct mass transport from below them (Papazzoni
42 2017).

43
44
45
46 The connection between shallow aquifers is variable in time and depends on the gas flow activity. The
47 measurement of conduits depths indicates that they range varies from 0.5 to 5 m with a mode around 1.5 m; at
48 N2, however, we measured a depth of 8 m and **15 m on** two distinct occasions. Our observations suggest that
49 conduit opening is variable through time, some conduits may close and then reactivate; the whole conduit
50 network appears to be in a state of continuous change and individual conduits are temporary features.
51 Furthermore, the observations of Kopf (2002) that mud pools conduits are larger than those of gryphons is also

1
2
3
4
5
6
7 confirmed by our observations. The N2 mud pool, in fact, is the only one where we could lower our sounding
8 line in several points without any impediment and it is the one where we have reached the largest depth (15
9 m).

10
11 Correlation coefficients of mud levels variations between **mud** volcanoes depend on the conduit geometry,
12 type, as well as their connection (i.e., direct connection and degree of tortuosity). High correlation coefficients
13 between *ML* vents (Table 2 and Figure 4) could be explained by the connection to the same source (**shallow**
14 **reservoir aquifer**) whereas low correlation coefficients may represent separation of the conduits feeding the
15 different pools and mud vents.
16
17

18 In the Nirano system, *ML* and P_{atm} are not correlated (Table 2, Figure 4) and this is further confirmed by the
19 barometric efficiency analysis in Figure 7. The influence of barometric pressure on a groundwater surface can
20 follow several scenarios. In confined aquifers, the change in water level is caused by a change in the force
21 applied to the Earth's surface by the atmospheric pressure—higher atmospheric pressure causes a greater load,
22 which is transferred to water at depth, causing the water pressure within the aquifer to rise (Rasmussen 2005).
23 The unconfined aquifers show delayed responses due to the delay in transmitting the atmospheric pressure
24 signal through the vadose zone to the water table surface (Spane 2002). If the system were affected by
25 barometric-pressure change, the slopes of the fitted linear curves in Figure 7 would be positive. As it can be
26 seen, the coefficients of determination (R-squared values) are all small, indicating no significant barometric
27 efficiency (Figure 7). Gas storage and overpressure in small shallow aquifers and flow from those to the surface
28 seems more important than the barometric pressure change.
29
30

31
32 The mud level variance (Figure 6) is an indicator of gas activity in the monitored mud pools. Peaks appear
33 following periods of quiescence during which gas accumulates and overpressure increases in the small aquifers
34 system. The trend of these values indicates a chaotic system characterized by non-constant gas flow rates, with
35 an alternation of quiescence and extrusion activity periods (Figure 4 and Figure 6). This is further confirmed
36 by some drawdown tests carried out on site (by emptying the N3 mud pool), during which no linear recovery
37 of mud level was observed, testifying the presence of a non-continuous and constant flow in the conduits.
38
39

40 The different mud levels measured at the vents seem to be controlled by the variable gas-liquid ratio in the
41 mud conduit (Figure 8 and Figure 9). Low mud levels correspond to the vents that do not allow gas
42 accumulation (fast continuous degassing) in their conduits and their pressure head is dominated by mud
43 density (low gas-liquid ratio) whereas volcanoes whose conduits are occupied by gas bubbles that move slowly
44 (high gas-liquid ratio) have a higher mud level dominated by the gas volume. The latter are more likely to
45 erupt mud suddenly and unexpectedly than the former type. In Figure 9, mud level and gas flow data highlight
46 two main groups (N1-N14 on the Eastern side, and N15-N18 on the Western side of the Nirano *Salse*), which
47 could indicate two different shallow aquifers at different depths (Figure 11c). Neighbouring volcanoes have
48 comparable but not equal mud level values. The mud viscosity is variable and heterogeneous, depending on
49 climatic conditions, depth of measurements along the conduits, and, more importantly, gas flow. Also mud
50 density is heterogenous and as gas flow increases, density will decrease along with viscosity. However, as
51
52
53
54
55
56
57
58
59
60
61
62
63
64
65

1
2
3
4
5
6
7
8 shown in Table 2, gas flow is not the only cause. Dilution with rainwater and evaporation during hot and dry
9 periods could contribute to density variability.

10 By considering the possible fluid sources that we discussed in section 2.4 and our observations, we confirm
11 that the reason for fluid release at the Nirano *Salse* is leakage of a hydrocarbon seal (Figure 11c) as already
12 proposed by other authors (Capozzi and Picotti 2002; Bonini 2007, 2008; Oppo et al. 2013). Abnormal
13 overpressure in a deep reservoir (*Marnoso-Arenacea* Fm) would be generated by gas accumulation following
14 secondary migration. Fluids could escape from a seal broken by a fault, or gas may leak from the spill-point
15 of a faulted reservoir layer. The seal could also have a valve behavior and fail when the overpressure in the
16 gas reservoir increases due to the continuous gas migration from below. The novelty of our model is that gas
17 following upward migration routes, such as faults and fractures (Figure 11c), would accumulate in shallow
18 aquifers confined within the *FAA* and then be released when the fluids overpressure would exceed the tensional
19 strength of the seal (Gibson, 1994). In this way, the conduits forming the mud volcanoes would start at the
20 depth of this shallow aquifers (5 to 30 m from the surface) as also measured by our soundings, which has not
21 been recognized in the past. Conduits may have different shapes (cylindrical to fracture-like) and may be
22 interconnected where mud volcanoes are in proximity as also suggested by our mud level correlations. The
23 system of fractures and conduits feeding from the deep source into the shallow aquifers cannot be assessed by
24 our work and is better addressed by geophysical methodologies.

25
26
27
28
29 The implications of recognizing the role of shallow aquifers in mediating gas/mud release at mud volcanoes is
30 important as aquifer dynamics (recharge, depletion, etc.) is critical for the extrusion of mud at the surface. We
31 observed that mud levels are low in conduits with continuous degassing, whereas they are high in conduits
32 with discontinuous activity. These latter are associated with abrupt “Strombolian type” eruptions that are a risk
33 for visitors in proximity to the mud volcanoes, as demonstrated by the casualties at the *Macalube di Aragona*
34 (*Agrigento*). Mud levels dynamics mediated by the presence of shallow aquifers could be used as an indicator
35 for geosite safety, also in other mud volcanoes of the world with high tourist frequentations.

36 37 38 39 40 41 **Conclusions**

42 This work has presented a novel conceptual model for mud flow dynamics in the shallow subsurface below
43 mud volcanoes by highlighting the important role that surface aquifers have in controlling extrusion frequency
44 and type. The model, despite being developed locally at the *Salse of Nirano*, has implications for other mud
45 volcanoes areas in Italy (i.e., *Macalube di Aragona - Agrigento*) and of the world, such as in the Caucasus,
46 Trinidad, and Colombia. In the specific, the model can help forecast activity of the mud volcanoes by means
47 of mud level monitoring and contribute to improve the geosite safety for visitors.

48
49 The important points and conclusions that we can draw from our study are the following:

- 50
51
52 1. Mud level in the different mud pools and mud volcanoes depends on the gas-liquid ratio within the
53 individual conduits, and on the geometric characteristics of the conduits. For this reason, different mud

54
55
56
57
58
59
60
61
62
63
64
65

Commented [A35]: This is very site specific. The conclusion only relates to this system. The broader implications are not considered

Commented [A36]: In the amended conclusions our inferences have been made less site specific and a broader connection is highlighted

1
2
3
4
5
6
7
8 levels at mud volcanoes clusters do not exclude a connection of the conduits at depth. Mud levels time
9 series in a cluster of mud volcanoes, in fact, suggests that they are somehow connected at the
10 groundwater of shallow aquifers. The morphology of the mud volcanoes is also related to the
11 frequency of degassing: mud volcanoes with low degassing form gryphons associated with abrupt mud
12 emissions, whereas fast and continuous degassing is associated with mud pools or gentler slope
13 volcanoes, whose activity consists of fluid mud extrusions.
14

- 15 2. Geologic data indicate the presence of shallow aquifers located in the first 30 m below the ground.
16 These units could be distal turbidite lobes with coarser grain size than the surrounding clay, and act as
17 small local temporary storage reservoirs where gas, raising from the main deep reservoir in the
18 *Mamoso-Arenacea* Fm and Epi-Ligurian Units, accumulates generating fluid overpressures. The gas
19 alimentation from the depth is not constant over time, and as the pressure in the aquifers increases and
20 overcomes the tensional strength of the seal, it comes to the surface following new or pre-set conduits
21 depending on the pressure in the aquifer. The gas liquefies and drags solid material from the conduit
22 walls carrying along to the surface clay, silt, and peat fragments. Shallow aquifers recharge from the
23 surface and from the fluid conduits at depth may contribute to mud flow extrusions frequency in time.
24
25

26
27 The presented conceptual model integrates and expands the geological and structural models already existing
28 for mud volcano areas and completes the understanding of processes of mud extrusions and gas seepage by
29 highlighting the links with shallow aquifers. More work, however, is required to understand at what stage of
30 development is a mud volcanoes field (in terms of amount of fluids ascending from a deep reservoirs) and the
31 connection between shallow aquifers processes and ascending deep fluids processes. Important questions such
32 as: Is this phenomenon fading in time or is it dormant and preparing for new temperamental activity phases?
33 Can we use the degassing level as an indicator for an imminent abrupt extrusion? Can a sudden change in mud
34 level in a mud conduit forecast an important extrusion phase? These are important questions that we can in
35 part address with our observations and that are important issues, in particular, for areas where mud volcanoes
36 attract geo-tourists around the world.
37
38
39
40

41 **Acknowledgements**

42 The authors thanks Luciano Callegari for his support in the logistics and the warm welcome. This study was
43 performed with the support from the Fiorano Modenese Municipality (Italy) and the Management Authority
44 for Park and Biodiversity of Central Emilia (Ente di Gestione per i Parchi e la Biodiversità Emilia Centrale,
45 Italy). We also thanks to anonymous reviewers who greatly contributed to improve our manuscript.
46
47
48
49

50 **References**

51 Accaino F, Bratus A, Conti S, et al (2007) Fluid seepage in mud volcanoes of the northern Apennines: An
52 integrated geophysical and geological study. *Journal of Applied Geophysics* 63:90–101.
53 <https://doi.org/10.1016/j.jappgeo.2007.06.002>
54

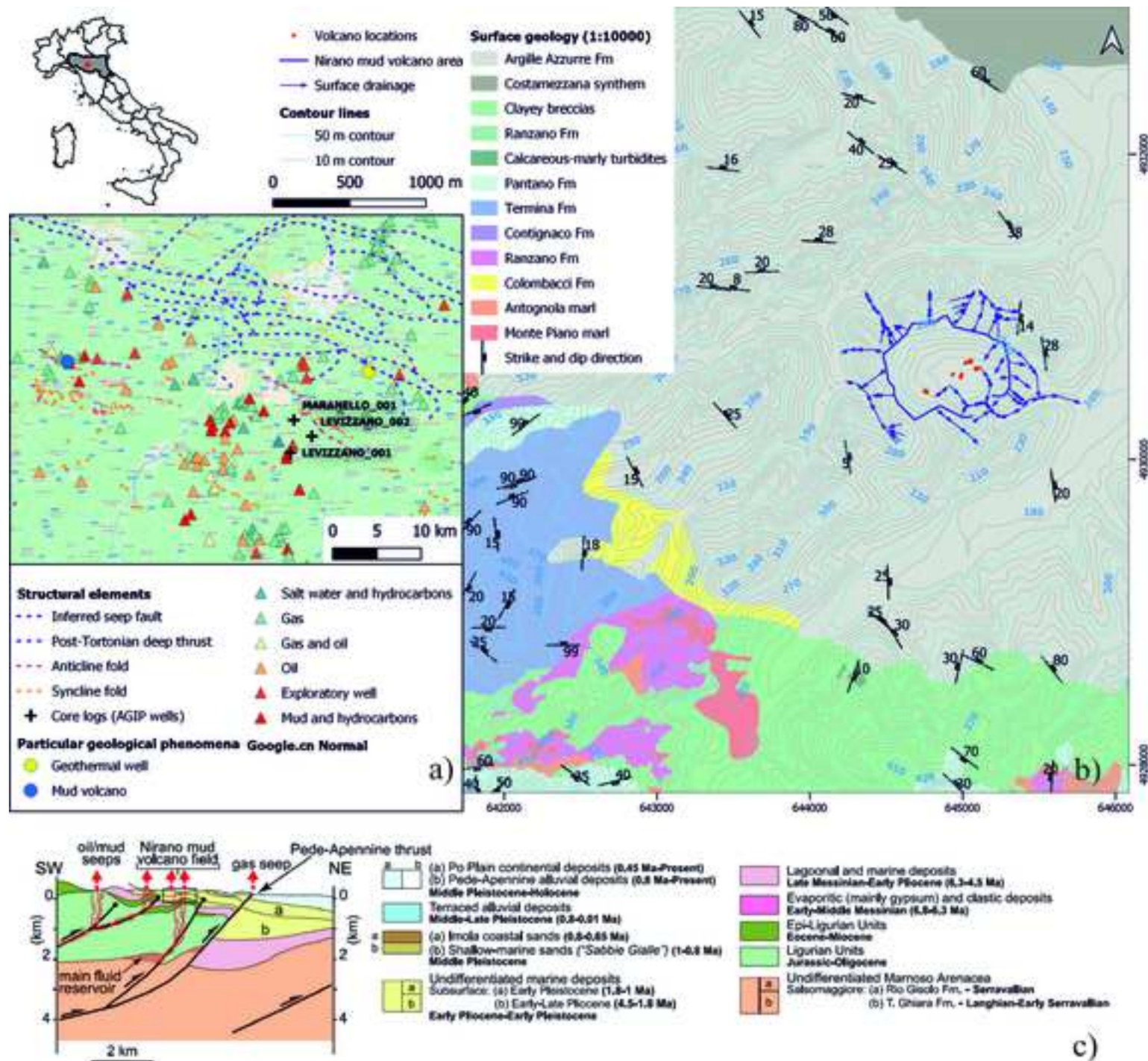
- 1
2
3
4
5
6
7
8 Bonini M (2012) Mud volcanoes: Indicators of stress orientation and tectonic controls. *Earth-Science Reviews* 115:121–152. <https://doi.org/10.1016/j.earscirev.2012.09.002>
- 9
10 Bonini M (2008) Elliptical mud volcano caldera as stress indicator in an active compressional setting (Nirano, Pedo-Apennine margin, northern Italy). *Geol* 36:131. <https://doi.org/10.1130/G24158A.1>
- 11
12 Bonini M (2007) Interrelations of mud volcanism, fluid venting, and thrust-anticline folding: Examples from the external northern Apennines (Emilia-Romagna, Italy). *J Geophys Res* 112:B08413. <https://doi.org/10.1029/2006JB004859>
- 13
14
15
16 Bonini M (2009) Mud volcano eruptions and earthquakes in the Northern Apennines and Sicily, Italy. *Tectonophysics* 474:723–735. <https://doi.org/10.1016/j.tecto.2009.05.018>
- 17
18 Borgatti L, Giovanna B, Edoardo BA, et al (2019) Evidence of late-Holocene mud-volcanic eruptions in the Modena foothills (northern Italy). *The Holocene* 29:975–991. <https://doi.org/10.1177/0959683619831418>
- 19
20
21 Boschetti T, Toscani L, Shouakar-Stash O, et al (2011) Salt Waters of the Northern Apennine Foredeep Basin (Italy): Origin and Evolution. *Aquat Geochem* 17:71–108. <https://doi.org/10.1007/s10498-010-9107-y>
- 22
23
24 Capozzi R, Picotti V (2002) Fluid migration and origin of a mud volcano in the Northern Apennines (Italy): the role of deeply rooted normal faults: Mud volcanoes and deeply rooted normal faults. *Terra Nova* 14:363–370. <https://doi.org/10.1046/j.1365-3121.2002.00430.x>
- 25
26
27 Capozzi R, Picotti V (2010) Spontaneous fluid emissions in the Northern Apennines: geochemistry, structures and implications for the petroleum system. Geological Society, London, Special Publications 348:115–135. <https://doi.org/10.1144/SP348.7>
- 28
29
30 Conti A, Sacchi E, Chiarle M, et al (2000) Geochemistry of the formation waters in the Po plain (Northern Italy): an overview. *Applied Geochemistry* 15:51–65. [https://doi.org/10.1016/S0883-2927\(99\)00016-5](https://doi.org/10.1016/S0883-2927(99)00016-5)
- 31
32
33 Dasgupta T, Mukherjee S (2020) *Sediment Compaction and Applications in Petroleum Geoscience*. Springer International Publishing, Cham
- 34
35
36 Evans RJ, Stewart SA, Davies RJ (2008) The structure and formation of mud volcano summit calderas. *Journal of the Geological Society* 165:769–780. <https://doi.org/10.1144/0016-76492007-118>
- 37
38
39 Fowler SR, Mildenhall J, Zalova S, et al (2000) Mud volcanoes and structural development on Shah Deniz. *Journal of Petroleum Science and Engineering* 28:189–206. [https://doi.org/10.1016/S0920-4105\(00\)00078-4](https://doi.org/10.1016/S0920-4105(00)00078-4)
- 40
41
42 Gamkrelidze I, Okrostsvavidze A, Koiava K, Maisadze F (2021) *Geotourism Potential of Georgia, the Caucasus: History, Culture, Geology, Geotourist Routes and Geoparks*. Springer International Publishing, Cham
- 43
44
45 Gattuso A, Italiano F, Giorgio C, et al (2020) The mud volcanoes at Santa Barbara and Aragona (Sicily, Italy): Their potential hazards for a correct risk assessment. Other Hazards (e.g., Glacial and Snow Hazards, Karst, Wildfires Hazards, and Medical Geo-Hazards)
- 46
47
48 Gibson, R.G. (1994) Fault-Zone Seals in Siliciclastic Strata of the Columbus Basin, Offshore Trinidad. *Bulletin* 78:. <https://doi.org/10.1306/A25FECA7-171B-11D7-8645000102C1865D>
- 49
50
51
52
53
54
55
56
57
58
59
60
61
62
63
64
65

- 1
2
3
4
5
6
7
8 Gonthier (2007) A graphical method for estimation of barometric efficiency from continuous data - concepts
9 and application to a site in the Piedmont, Air Force Plant 6, Marietta, Georgia. U.S. Geological Survey,
10 Reston, Virginia
- 11 Hare PW, Morse RE (1999) Monitoring the Hydraulic Performance of a Containment System with Significant
12 Barometric Pressure Effects. *Ground Water* 37:755–763. [https://doi.org/10.1111/j.1745-](https://doi.org/10.1111/j.1745-6584.1999.tb01168.x)
13 [6584.1999.tb01168.x](https://doi.org/10.1111/j.1745-6584.1999.tb01168.x)
- 14 Heller C, Blumenberg M, Kokoschka S, et al (2011) Geomicrobiology of Fluid Venting Structures at the Salse
15 di Nirano Mud Volcano Area in the Northern Apennines (Italy). In: *Advances in Stromatolite*
16 *Geobiology*. Springer Berlin Heidelberg, Berlin, Heidelberg, pp 209–220
- 17 Kopf AJ (2002) Significance of mud volcanism. *Rev Geophys* 40:1005.
18 <https://doi.org/10.1029/2000RG000093>
- 19
20 Krumbein, W. C. (1934) Size Frequency Distributions of Sediments. *SEPM JSR Vol. 4:*
21 <https://doi.org/10.1306/D4268EB9-2B26-11D7-8648000102C1865D>
- 22 Lewis EL, Perkin RG (1981) The practical salinity scale 1978: conversion of existing data. *Deep Sea Research*
23 *Part A Oceanographic Research Papers* 28:307–328. [https://doi.org/10.1016/0198-0149\(81\)90002-9](https://doi.org/10.1016/0198-0149(81)90002-9)
- 24
25 Lupi M, Ricci BS, Kenkel J, et al (2016) Subsurface fluid distribution and possible seismic precursory signal
26 at the Salse di Nirano mud volcanic field, Italy. *Geophys J Int* 204:907–917.
27 <https://doi.org/10.1093/gji/ggv454>
- 28 Martinelli G, Cremonini S, Samonati E (2012) Geological and Geochemical Setting of Natural Hydrocarbon
29 Emissions in Italy. In: Al-Megren H (ed) *Advances in Natural Gas Technology*. InTech
- 30
31 Martinelli G, Judd A (2004) Mud volcanoes of Italy. *Geol J* 39:49–61. <https://doi.org/10.1002/gj.943>
- 32
33 Martinelli G, Rabbi (1998) The Nirano mud Volcanoes. Abstract and Guide Book, V International Conference
34 on Gas in Marine Sediment. 202–206
- 35
36 Mattavelli L, Novelli L (1988) Geochemistry and habitat of natural gases in Italy. *Organic Geochemistry* 13:1–
37 13. [https://doi.org/10.1016/0146-6380\(88\)90021-6](https://doi.org/10.1016/0146-6380(88)90021-6)
- 38
39 Mattavelli L, Pieri M, Groppi G (1993) Petroleum exploration in Italy: a review. *Marine and Petroleum*
40 *Geology* 10:410–425. [https://doi.org/10.1016/0264-8172\(93\)90044-S](https://doi.org/10.1016/0264-8172(93)90044-S)
- 41
42 Mattavelli, Ricchiuto Teodoro GD, Schoell Martin (1983) Geochemistry and Habitat of Natural Gases in Po
43 Basin, Northern Italy. *Bulletin* 67:.. [https://doi.org/10.1306/AD46094F-16F7-11D7-](https://doi.org/10.1306/AD46094F-16F7-11D7-8645000102C1865D)
44 [8645000102C1865D](https://doi.org/10.1306/AD46094F-16F7-11D7-8645000102C1865D)
- 45
46 Mazzini A (2009) Mud volcanism: Processes and implications. *Marine and Petroleum Geology* 26:1677–1680.
47 <https://doi.org/10.1016/j.marpetgeo.2009.05.003>
- 48
49 Mazzini A, Akhmanov G, Manga M, et al (2021) Explosive mud volcano eruptions and rafting of mud breccia
50 blocks. *Earth and Planetary Science Letters* 555:116699. <https://doi.org/10.1016/j.epsl.2020.116699>
- 51
52 Mazzini A, Etiope G (2017) Mud volcanism: An updated review. *Earth-Science Reviews* 168:81–112.
53 <https://doi.org/10.1016/j.earscirev.2017.03.001>
- 54
55
56
57
58
59
60
61
62
63
64
65

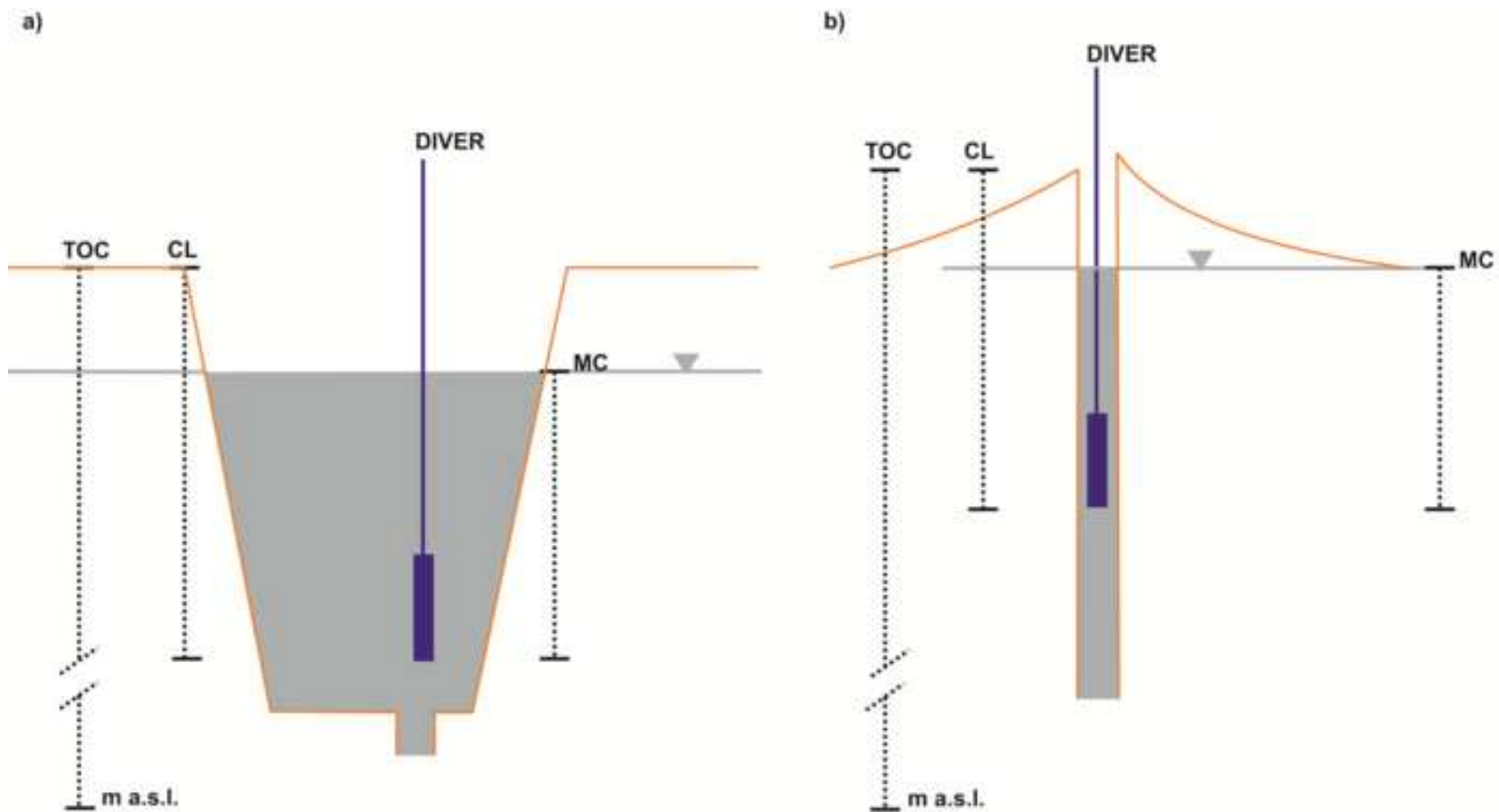
- 1
2
3
4
5
6
7
8 Milkov AV (2000) Worldwide distribution of submarine mud volcanoes and associated gas hydrates. *Marine*
9 *Geology* 167:29–42. [https://doi.org/10.1016/S0025-3227\(00\)00022-0](https://doi.org/10.1016/S0025-3227(00)00022-0)
- 10 Minissale A, Magro G, Martinelli G, et al (2000) Fluid geochemical transect in the Northern Apennines
11 (central-northern Italy): fluid genesis and migration and tectonic implications. *Tectonophysics*
12 319:199–222. [https://doi.org/10.1016/S0040-1951\(00\)00031-7](https://doi.org/10.1016/S0040-1951(00)00031-7)
- 13 Onderdonk N, Mazzini A, Shafer L, Svensen H (2011) Controls on the geomorphic expression and evolution
14 of gryphons, pools, and caldera features at hydrothermal seeps in the Salton Sea Geothermal Field,
15 southern California. *Geomorphology* 130:327–342. <https://doi.org/10.1016/j.geomorph.2011.04.014>
- 16 Oppo D, Capozzi R, Picotti V (2013) A new model of the petroleum system in the Northern Apennines, Italy.
17 *Marine and Petroleum Geology* 48:57–76. <https://doi.org/10.1016/j.marpetgeo.2013.06.005>
- 18
19 Oppo D, Viola I, Capozzi R (2017) Fluid sources and stable isotope signatures in authigenic carbonates from
20 the Northern Apennines, Italy. *Marine and Petroleum Geology* 86:606–619.
21 <https://doi.org/10.1016/j.marpetgeo.2017.06.016>
- 22 Papazzoni (2017) Studio micropaleontologico dei fanghi delle Salse di Nirano. *Atti della Società dei Naturalisti*
23 *e Matematici di Modena* 121–126
- 24
25 Picotti V, Capozzi R, Bertozzi G, et al (2007) The Miocene Petroleum System of the Northern Apennines in
26 the Central Po Plain (Italy). In: Lacombe O, Roure F, Lavé J, Vergés J (eds) *Thrust Belts and Foreland*
27 *Basins*. Springer Berlin Heidelberg, Berlin, Heidelberg, pp 117–131
- 28 Rasmussen T (2005) Barometric Efficiency. In: Lehr JH, Keeley J (eds) *Water Encyclopedia*. John Wiley &
29 Sons, Inc., Hoboken, NJ, USA, p me21
- 30 RER (1999) Note illustrative della Carta Geologica D'Italia alla scala 1:50000, foglio 219 Sassuolo
- 31
32 Revil A (2002) Genesis of mud volcanoes in sedimentary basins: A solitary wave-based mechanism. *Geophys*
33 *Res Lett* 29:1574. <https://doi.org/10.1029/2001GL014465>
- 34
35 Riva A, Salvatori T, Cavaliere R, et al (1986) Origin of oils in Po Basin, Northern Italy. *Organic Geochemistry*
36 10:391–400. [https://doi.org/10.1016/0146-6380\(86\)90038-0](https://doi.org/10.1016/0146-6380(86)90038-0)
- 37 Sciarra A, Cantucci B, Ricci T, et al (2019) Geochemical characterization of the Nirano mud volcano, Italy.
38 *Applied Geochemistry* 102:77–87. <https://doi.org/10.1016/j.apgeochem.2019.01.006>
- 39 Spane FA (2002) Considering barometric pressure in groundwater flow investigations: barometric pressure in
40 groundwater flow investigations. *Water Resour Res* 38:14-1-14–18.
41 <https://doi.org/10.1029/2001WR000701>
- 42
43 Stewart SA, Davies RJ (2006) Structure and emplacement of mud volcano systems in the South Caspian Basin.
44 *Bulletin* 90:771–786. <https://doi.org/10.1306/11220505045>
- 45 Tassi F, Bonini M, Montegrossi G, et al (2012) Origin of light hydrocarbons in gases from mud volcanoes and
46 CH₄-rich emissions. *Chemical Geology* 294–295:113–126.
47 <https://doi.org/10.1016/j.chemgeo.2011.12.004>
- 48 Tingay MRP, Hillis RR, Swarbrick RE, et al (2009) Origin of overpressure and pore-pressure prediction in the
49 Baram province, Brunei. *Bulletin* 93:51–74. <https://doi.org/10.1306/08080808016>
- 50
51 Vannoli P, Martinelli G, Valensise G (2021) The Seismotectonic Significance of Geofluids in Italy. *Front*
52 *Earth Sci* 9:579390. <https://doi.org/10.3389/feart.2021.579390>

1
2
3
4
5
6
7
8
9
10
11
12
13
14
15
16
17
18
19
20
21
22
23
24
25
26
27
28
29
30
31
32
33
34
35
36
37
38
39
40
41
42
43
44
45
46
47
48
49
50
51
52
53
54
55
56
57
58
59
60
61
62
63
64
65

Vezzalini, G., Marchetti Dori, S., Quartieri, S. (2017) Analisi mineralogiche e granulometriche dei fanghi delle Salse di Nirano. Atti della Società dei Naturalisti e Matematici di Modena 105–120







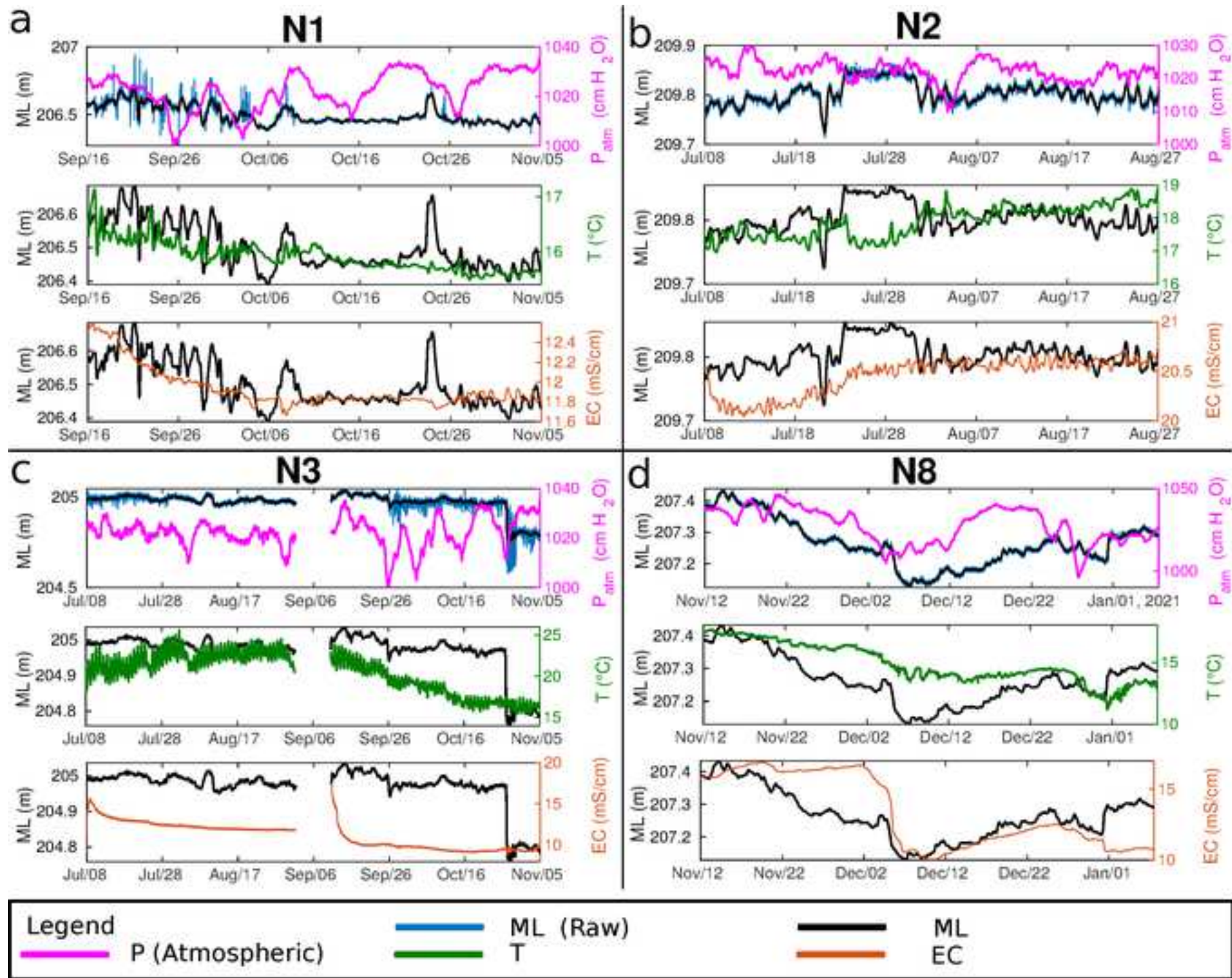
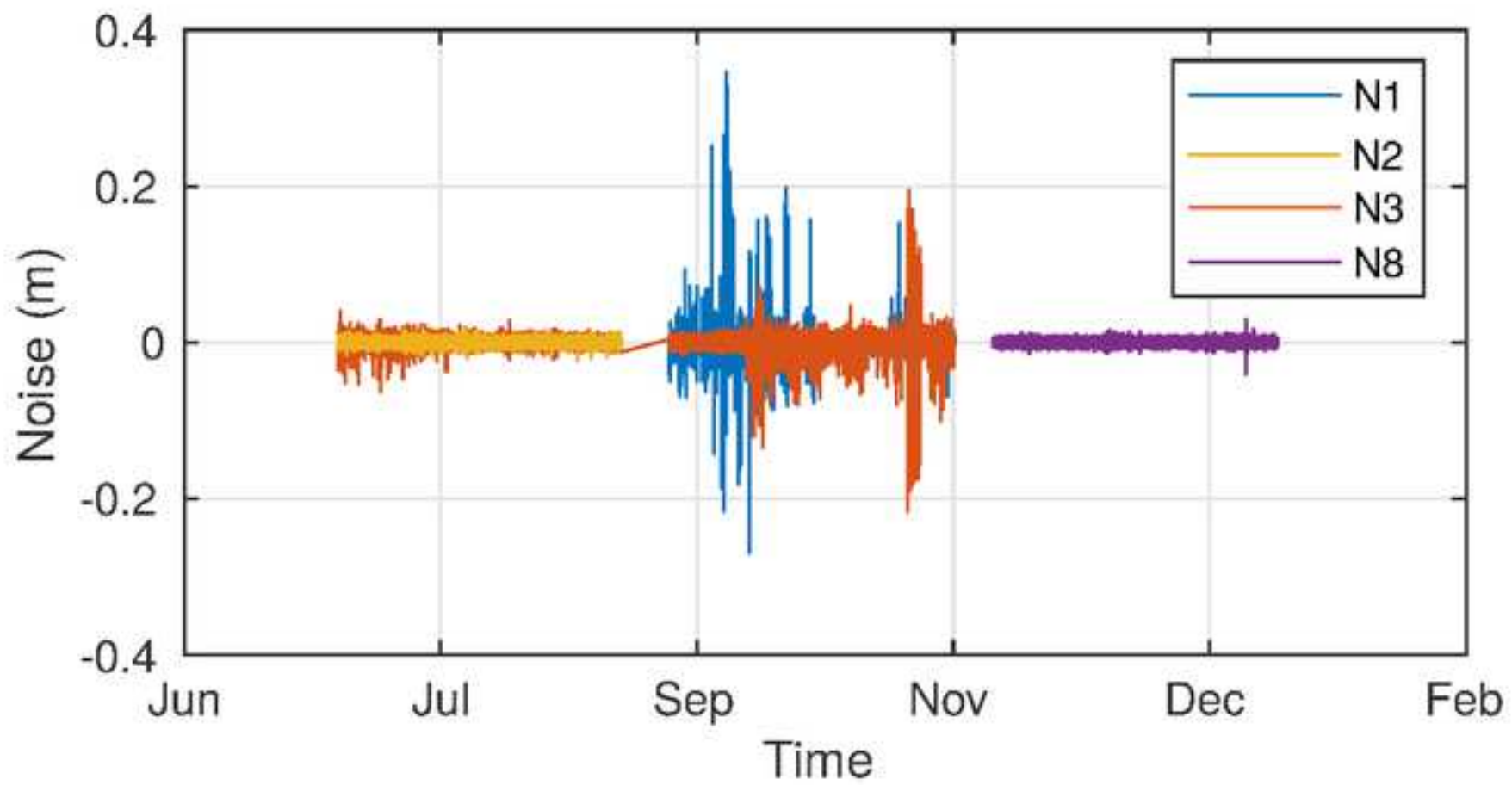
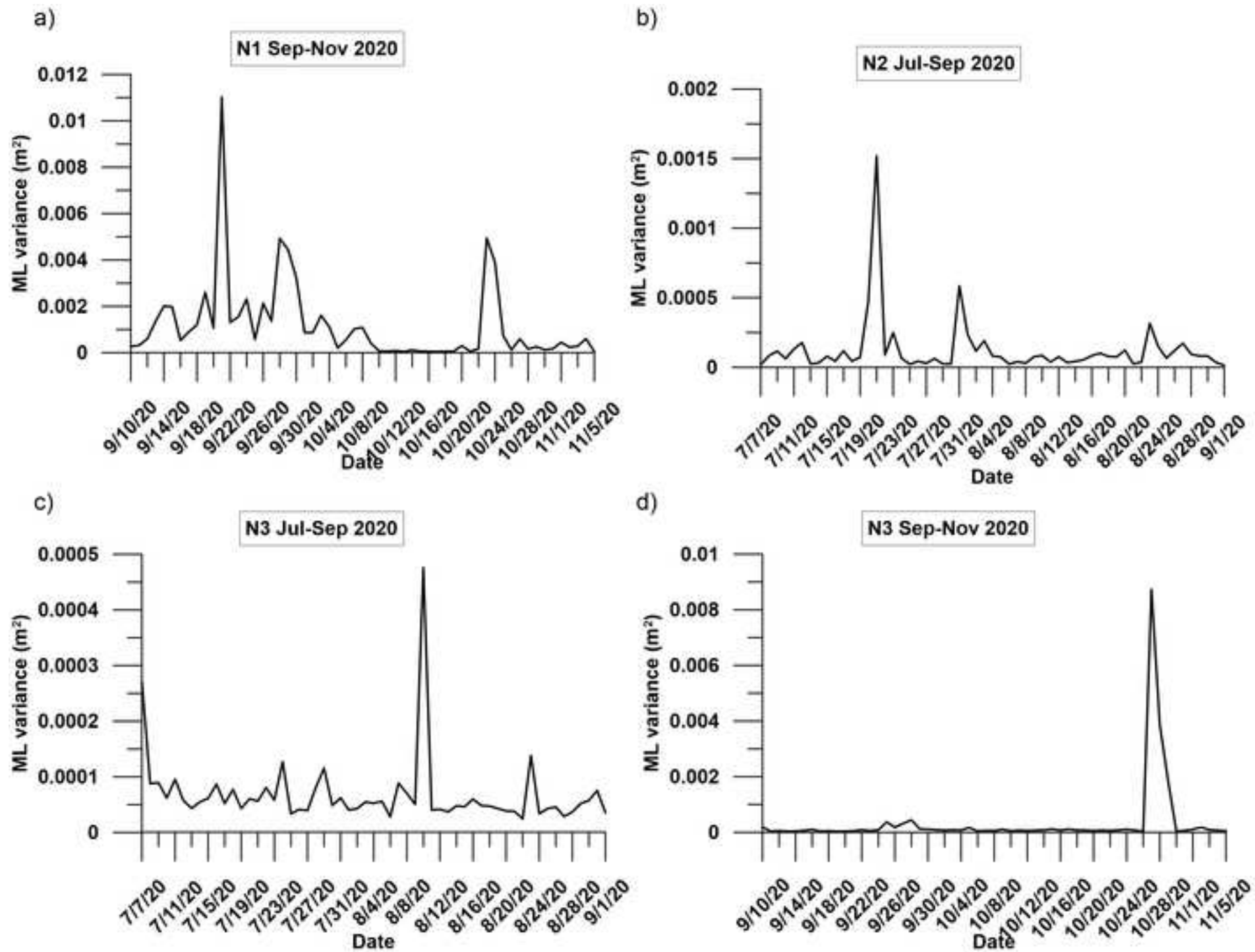
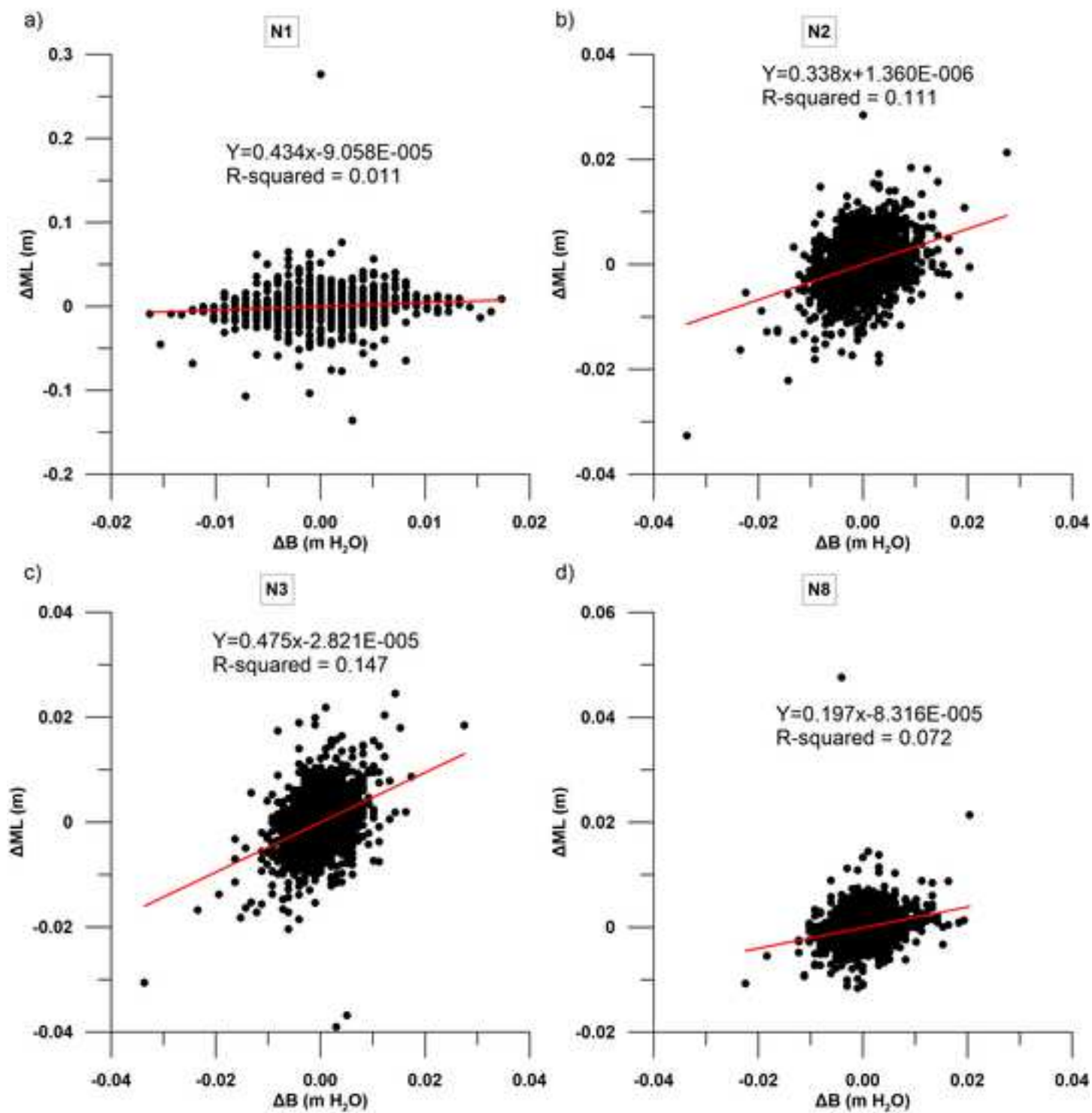
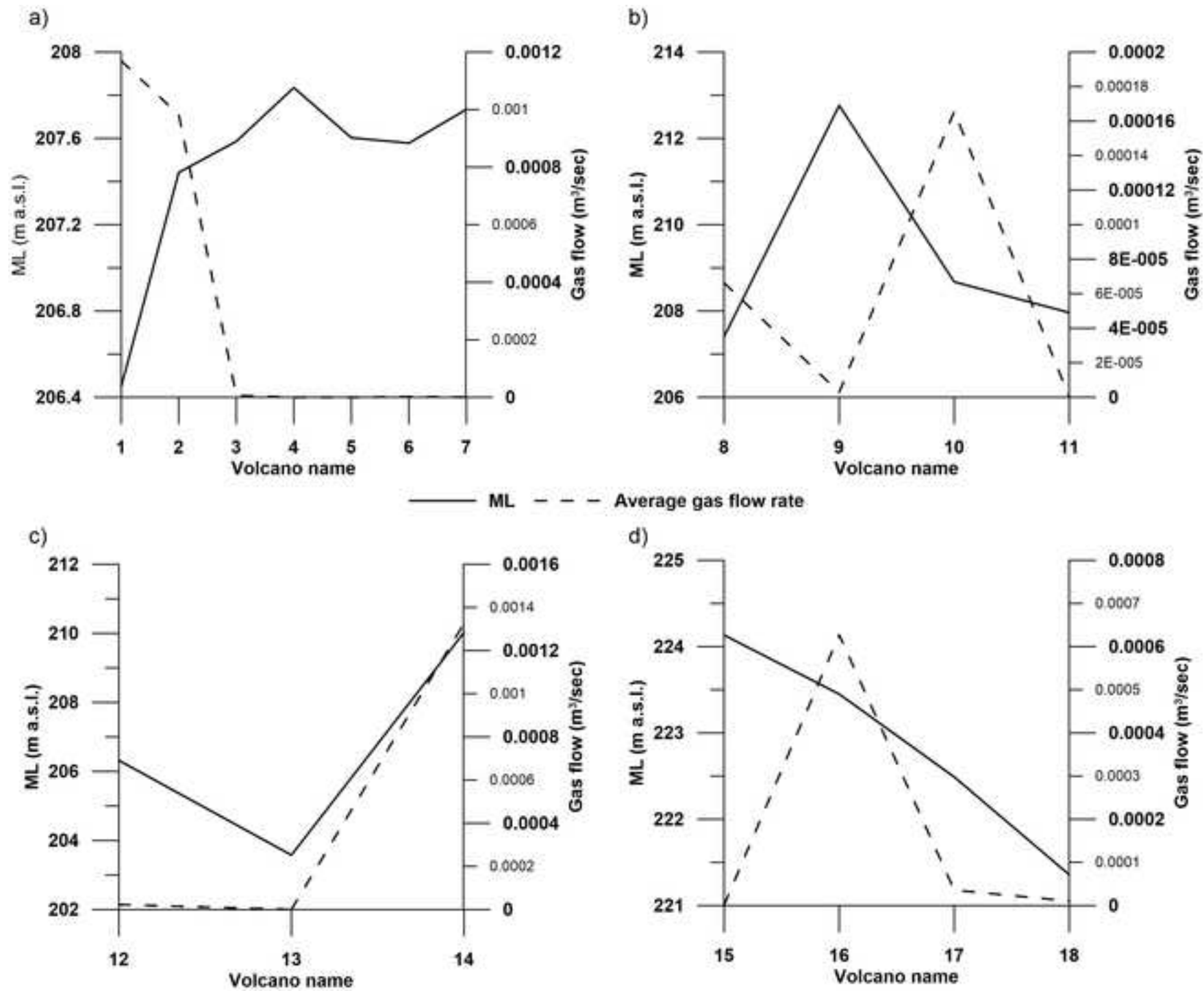


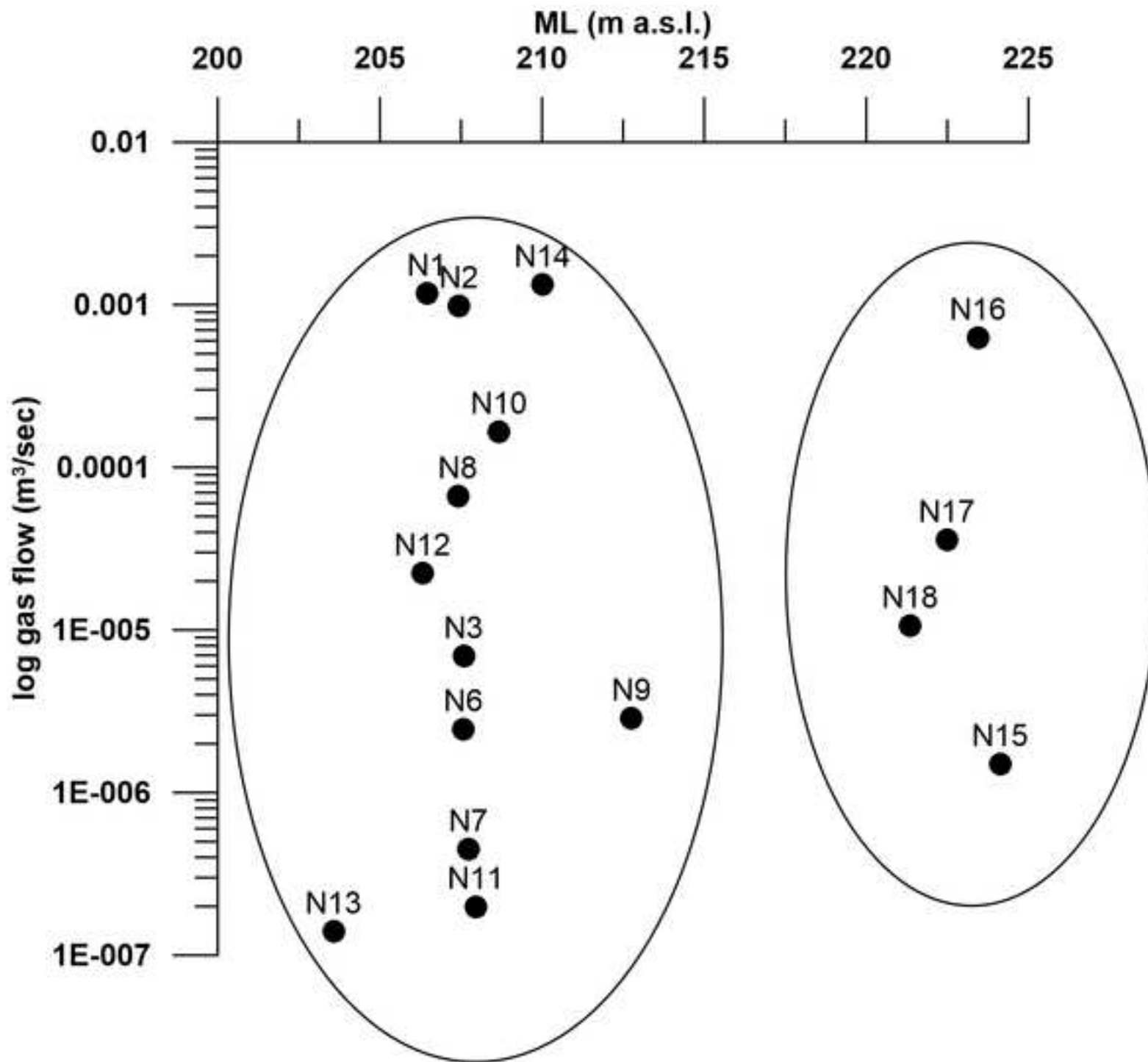
Figure 5

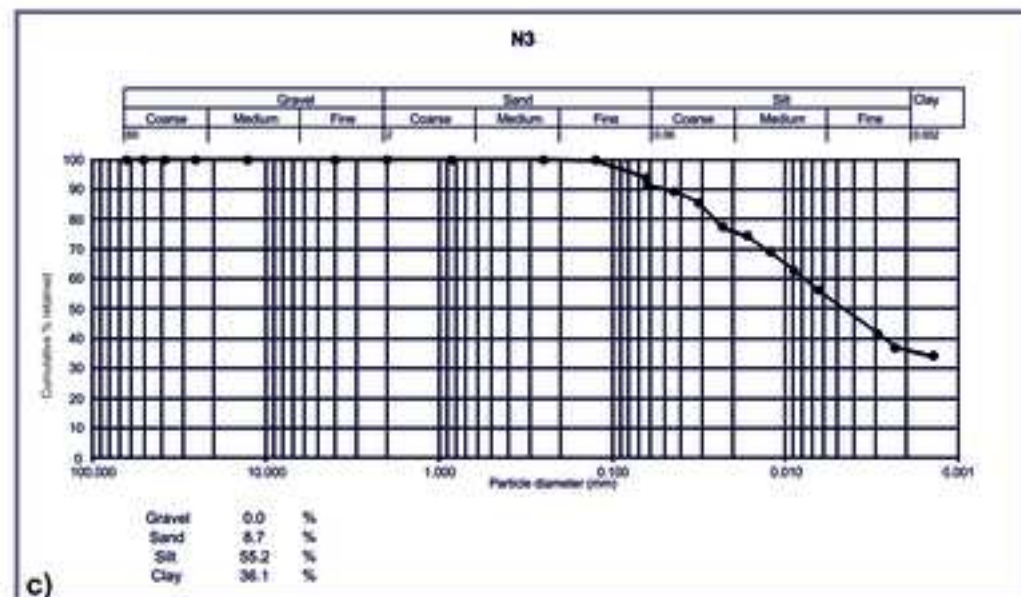
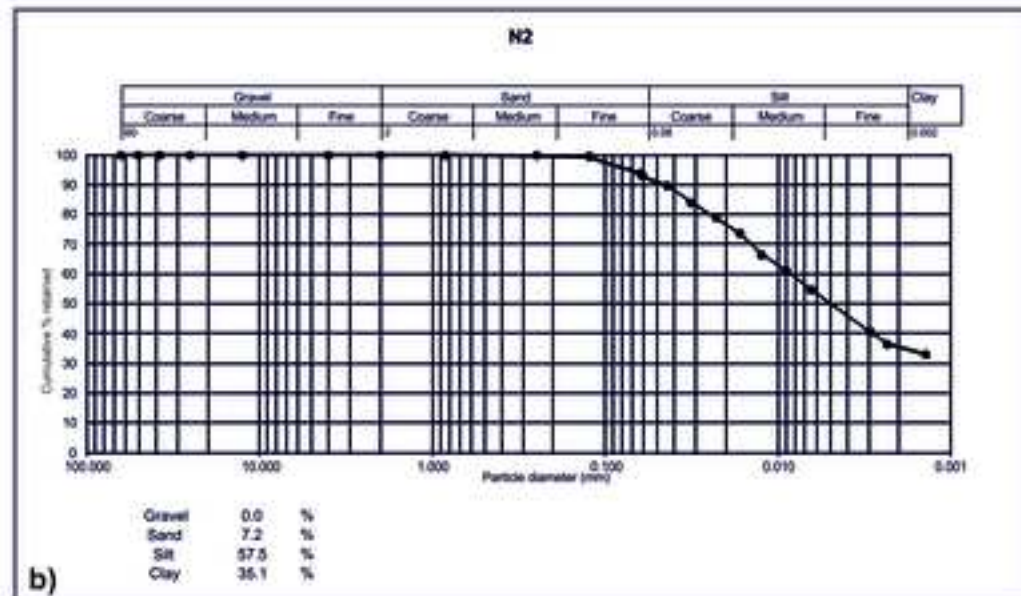
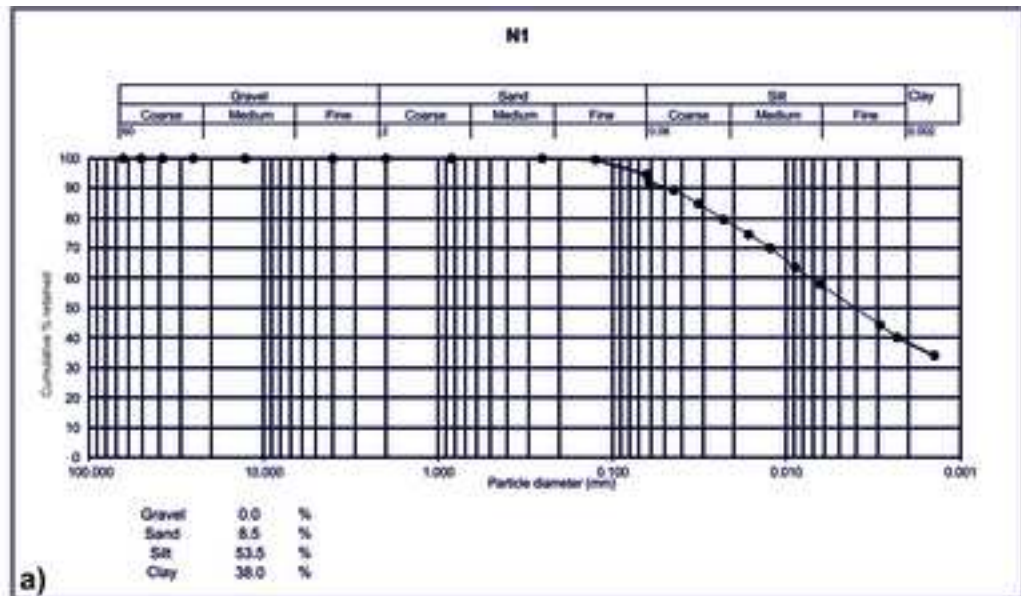


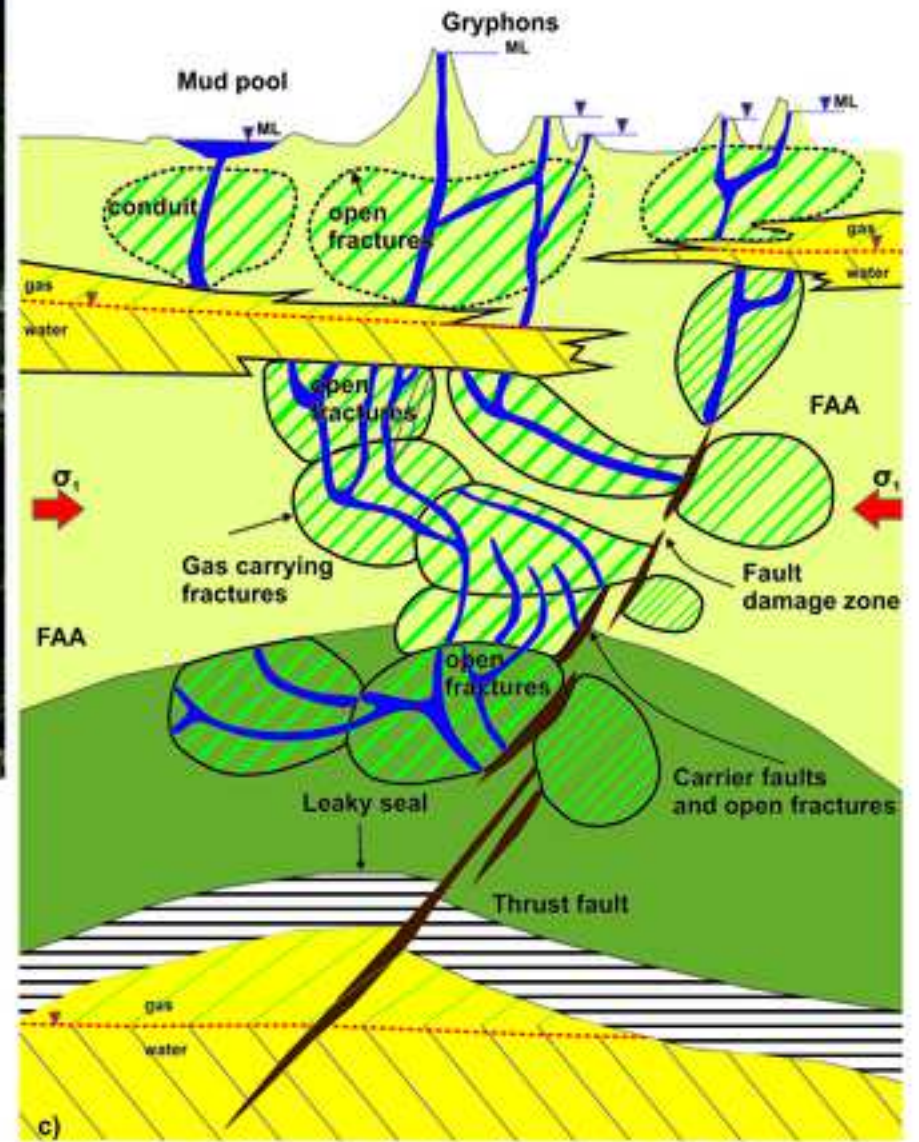
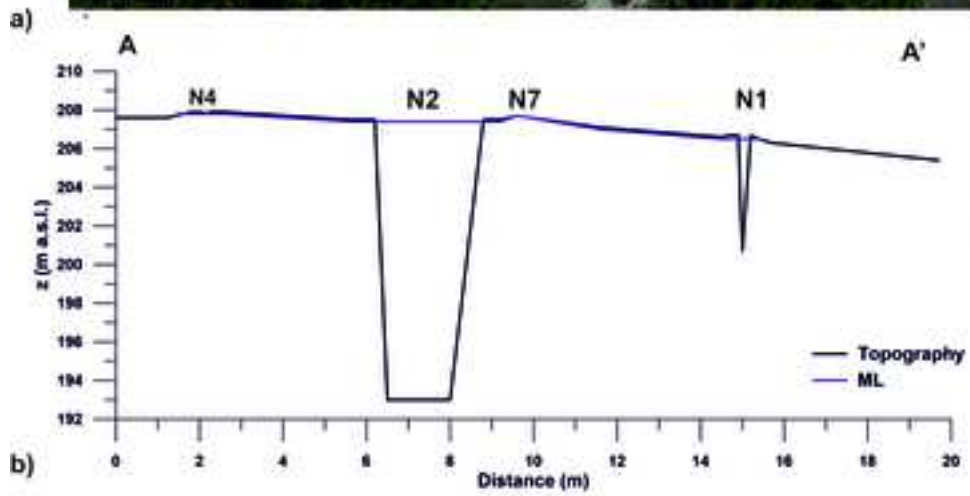












*Table 1 – Dates and time intervals of mud monitoring. Shown are also logger depths (m below the ground – m b.g.) and altimetry (m a.s.l.). Gray cells mean that data are available in that period; white cells mean that data are not available. Refer to **Error! Reference source not found.** for the mud pools locations.*

Mud pool or gryphon name	Altimetry (m a.s.l.)	Depth (m b.g)	1-second interval	5-minute interval		
			7/07/2020	7/07/2020 – 10/09/2020	10/09/2020 – 12/11/2020	12/11/2020 – 7/01/2021
N1	206.74	-3.00				
N2	207.41	-0.62				
N3	207.41	-3.00				
N8	207.62	-3.00				

Table 2 – Correlation coefficients of mud level (ML), electrical conductivity (EC), temperature (T) and atmospheric pressure (Patm) between the monitored volcanoes (N1, N2, and N3) at different time intervals (1-second, and 5-minute). ‘n.a.’ is for ‘not available data’.

	ML		ML-Patm	ML-EC	ML-T	Patm-EC
	1-second interval	5-minute interval				
N1-N2	0.80	n.a.				
N1-N3	0.70	0.50				
N2-N3	0.54	0.06				
	5-minute interval					
N1	-0.002	0.58	0.60	0.11	-0.26	0.33
N2	-0.01	0.15	-0.26	-0.26	0.11	0.33
N3	0.12	0.37	-0.12	0.33	0.11	0.33

Table 3 - Mud density values collected in N1, N2, N3 and N4.

	N1	N2	N3	N4
	ρ (g/l)			
	1152	1220	1173	1350
	1152	1221	1160	
	1150	1251	1167	
	1156	1261	1165	
	1147	1264	1153	
	1147	1265	1160	
	1146	#	1166	
	1145	#	1156	
Min	1145	1220	1153	
Max	1156	1265	1173	
Mean	1149	1247	1163	



Click here to access/download
Supplementary Material
Supplementary Information.docx

